



**5 Silverfox Court STRATHDALE VIC**

5 2 2

Situated in a quiet court walking distance from the picturesque Reservoir & busy hub of Strathdales commercial precinct & University.

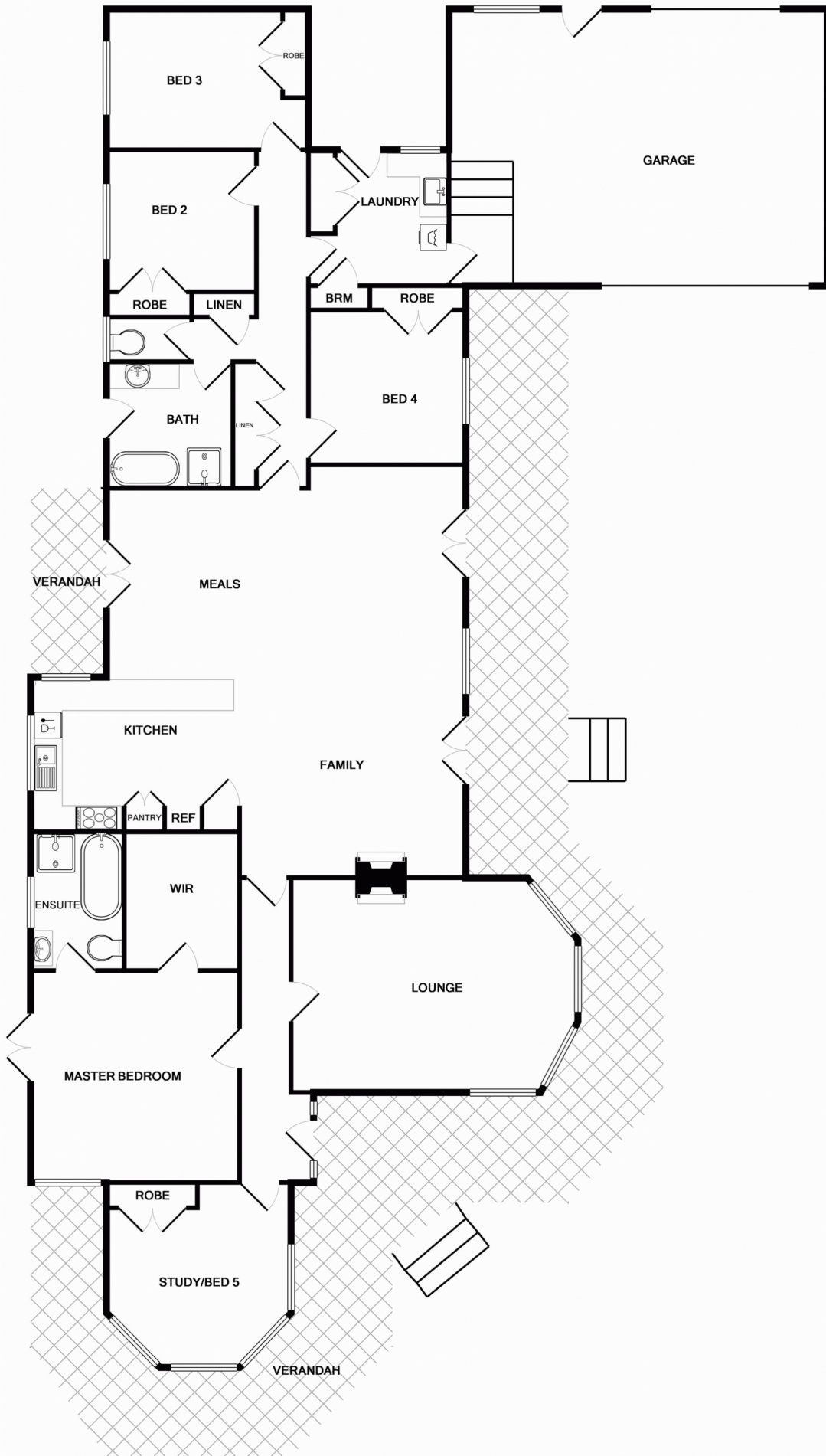
Beautifully designed with attractive verandahs private courtyard areas plus still room for a pool if required.

This spacious family home includes 2900m ceilings (approx 9'6") throughout, separate formal lounge with bay window, large open family dining & hostess kitchen, with double doors onto verandah front & back. Four excellent bedrooms, large master with full ensuite & walk in robe, built in robes in other three bedrooms plus study or fifth bedroom with robes and bay window.

Huge double garage with workshop area, ducted heating and cooling throughout, all situated on a beautifully gardened allotment of 1017sqm, just off Mayfield Parade.

**View** : <https://www.dck.com.au/sale/vic/greater-bendigo-region/strathdale/residential/house/5763713>





Whilst every attempt has been made to ensure the accuracy of the floor plan contained here, measurements of doors, windows, rooms and any other items are approximate and no responsibility is taken for any error, omission, or mis-statement. This plan is for illustrative purposes only and should be used as such by any prospective purchaser. The services, systems and appliances shown have not been tested and no guarantee as to their operability or efficiency can be given.