



25 Isabella Grove Strathdale VIC

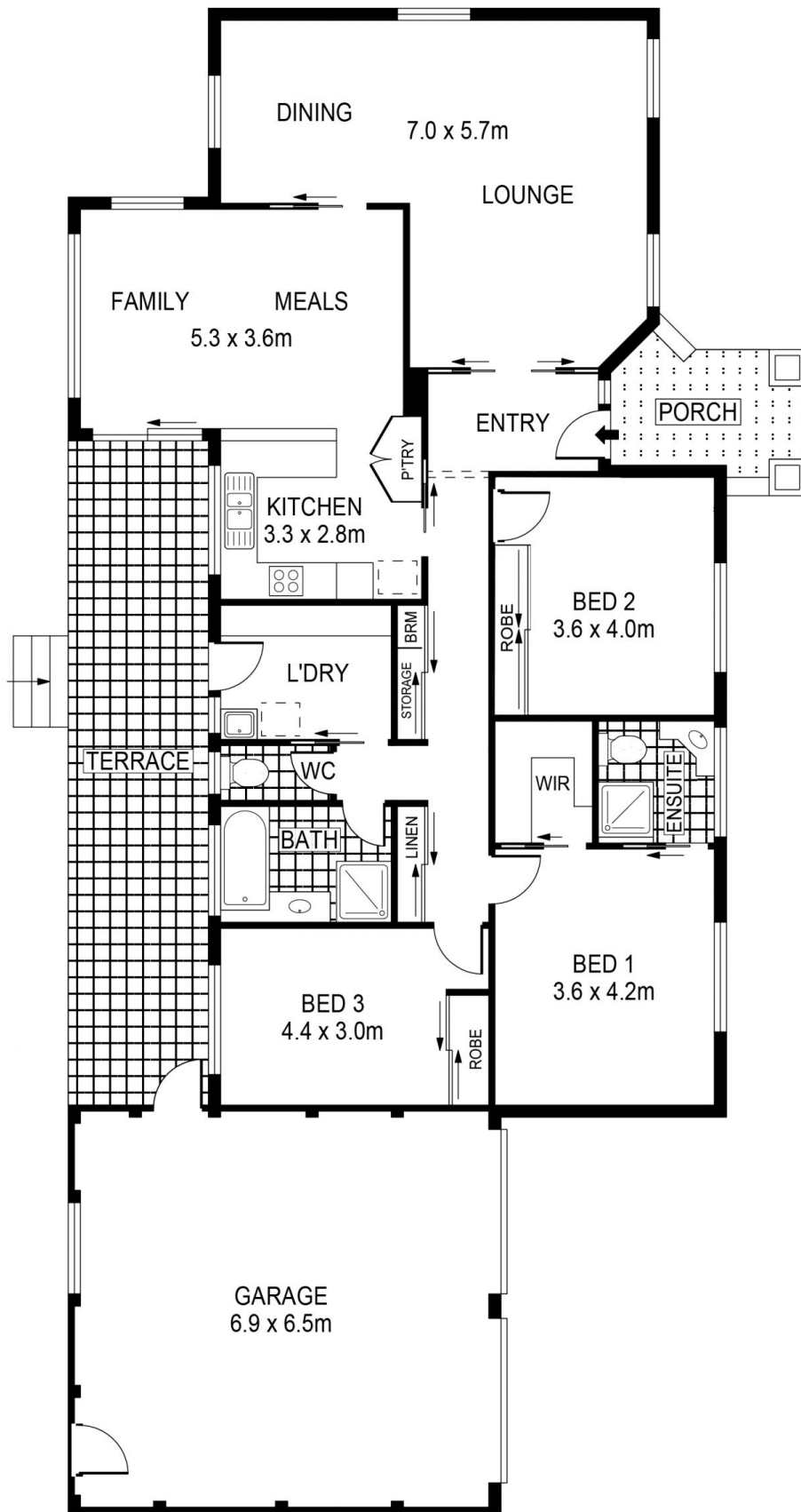
3 2 2

Located in a tranquil, leafy pocket enhanced by blooming gardens, this very liveable home offers a mix of light, comfort and low maintenance functionality. With a sheltered front porch to welcome visitors, the sun-kissed interior floor plan comprises spacious lounge with dining or alternately use as a handy study nook. Modern kitchen equipped with ample cupboards and pantry sits adjacent the relaxed living and meals which flows effortlessly to the undercover deck for year-round entertaining come rain, hail or shine. Master bedroom comprises walk-in robe and ensuite while 2 other generous bedrooms offer ample robe space, each serviced by a naturally lit central bathroom plus separate toilet and large laundry. Standout features include double lock-up garage with space for workshop, separate convenient side access perfect for caravan, boat or trailer, cosy floor heating and evaporative cooling. Only a short stroll to Kennington Reservoir, close to Strath

Price : \$ 420,000
Land Size : 536 sqm
View : <https://www.dck.com.au/sale/vic/greater-bendigo-region/strathdale/residential/house/5765339>



Kaye Lazenby
(03) 5440 5000



PLANS SHOWN ONLY INDICATIVE OF LAYOUT. DIMENSIONS ARE APPROXIMATE.
 Ref. No: 60645

25 ISABELLA GROVE