



38 Panorama Road Lockwood South VIC

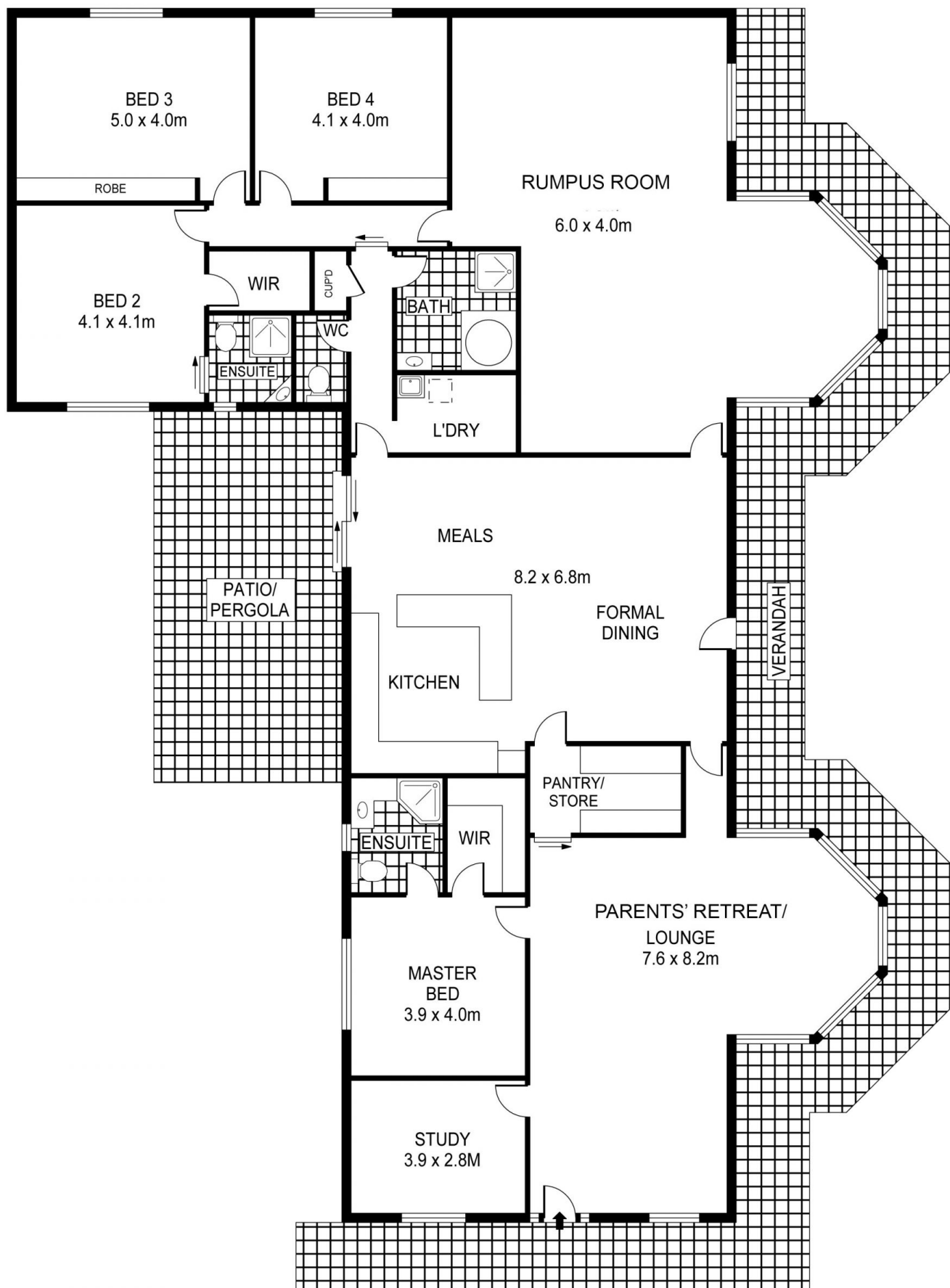
5 3 4

Perfect if you're looking for that 'something special', this beautifully presented family home offers a peaceful 'getaway' feel amidst 2.5 acres (approx.) with picturesque views over the rolling hills of Lockwood South. Nestled in-between historic Maldon, Castlemaine and Bendigo it's a leisurely drive to all three, with easy freeway access to Melbourne CBD. All light and space with windows displaying rustic views on all sides, this home is designed for the growing or extended family offering multi-suite accommodation across three separate living zones. The parents retreat comprises master suite, generous walk-in robe and ensuite with separate study all opening onto an extensive living space/formal lounge room. Central to the home is the impressive country-style timber kitchen, well-equipped with loads of cupboards and bench space and complimented by a walk-in butler's pantry. The adjacent open-plan meals and relaxed living area is huge

View : <https://www.dck.com.au/sale/vic/greater-bendigo-region/lockwood-south/residential/house/5766456>



Kaye Lazenby
(03) 5440 5000



PLANS SHOWN ONLY INDICATIVE OF LAYOUT. DIMENSIONS ARE APPROXIMATE.
Ref. No: 47919

38 PANORAMA ROAD