



23 Landale Drive Strathdale VIC

4 2 3

Located in one of Strathdale's most desirable locales, this property has it all; position, proportion and pizzazz. It's a showcase of quality and flawless presentation inside and out.

Light and space are two of the best decorating features and this home has loads of both. From the moment you step through the front portico into the tiled entry hall, the emphasis is on stylish-yet-easy living with an impressive mix of formal and informal living spaces.

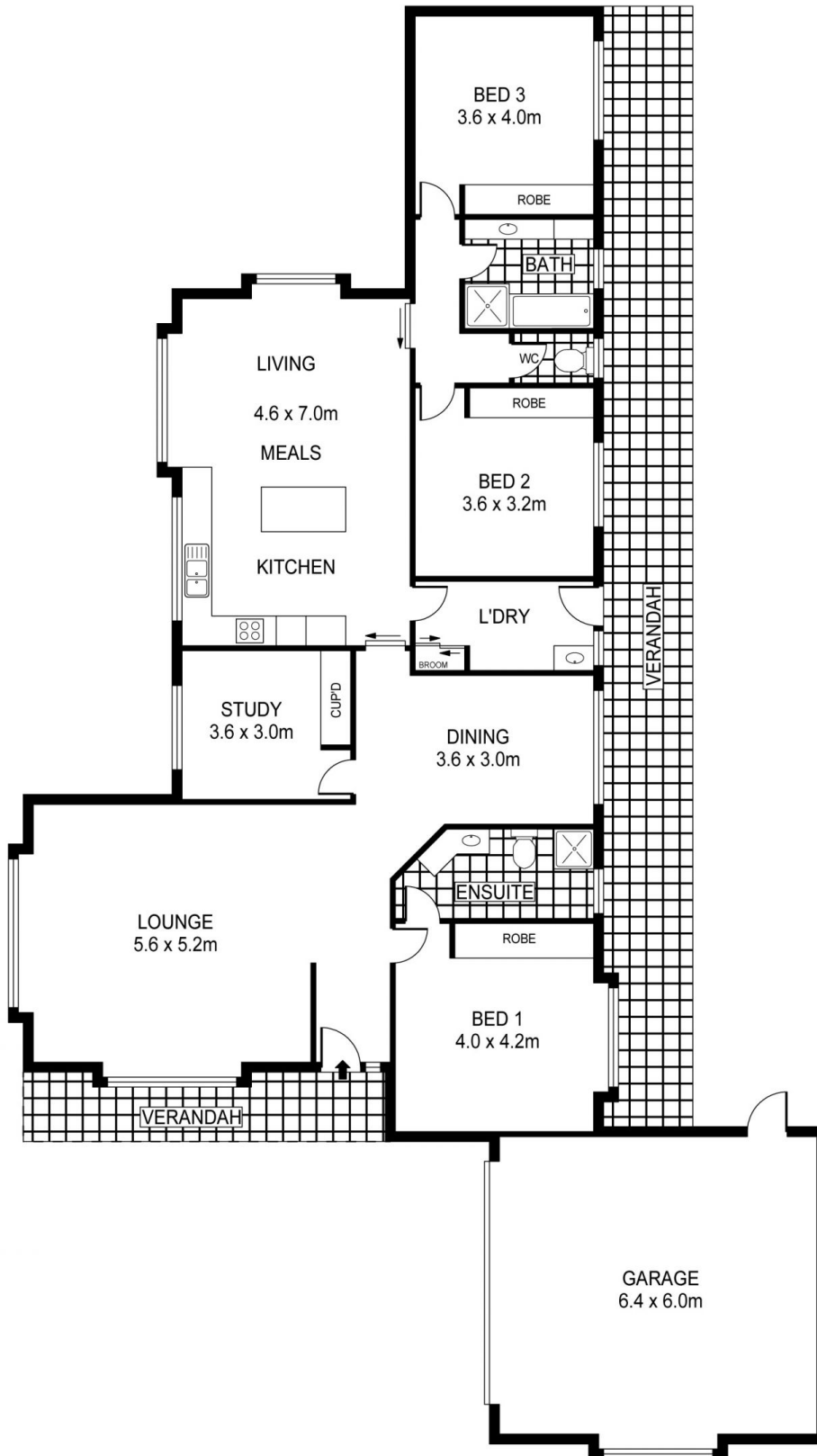
Spacious design includes generous formal lounge and dining rooms, four good-sized bedrooms, (all with robes), two bathrooms and open-plan kitchen/meals/family areas with views of the stunning gardens from every window.

The crisp white kitchen includes a black-topped island bench taking centre stage, stainless steel wall oven and cooktop, Miele dishwasher, pantry cupboard and sliding doors to a sun-drenched paved alfresco area surrounded

Price : \$ 515,000
Land Size : 1100 sqm
View : <https://www.dck.com.au/sale/vic/greater-bendigo-region/strathdale/residential/house/5766530>



Leonie Butler
(03) 5440 5000



SCALE (METRES)

PLANS SHOWN ONLY INDICATIVE OF LAYOUT. DIMENSIONS ARE APPROXIMATE.
Ref. No: 49668



23 LANDALE DRIVE