



256 Mclvor Road Strathdale VIC

5 4 7

Being a builder's own, this is not your standard home. Set on a secluded block approx 3932m² (1 acre) with Greater Bendigo National Park on two sides, it features imported sandstone external walls, cedar-lined ceilings, double-glazed windows with cedar-look sashes, granite benches, gas log fires, zoned ducted heating, cooling, vacuum & security cameras. Clever architect design provides ultimate privacy with living areas separately zoned from sleeping accommodation. Living spaces include large home office, sprawling open-plan living, dining and kitchen areas. French provincial-look kitchen serves up stacks of style with granite-topped island bench, 110 cm Falcon Dual fuel range, Miele dishwasher & butler's pantry with built-in microwave, steam oven, sink & ample storage. A utility area connects kitchen to large laundry with walk-in drying room. Secluded main suite encompasses parent's retreat, fully fitted walk-in dressing room/robe, luxurious ensuite

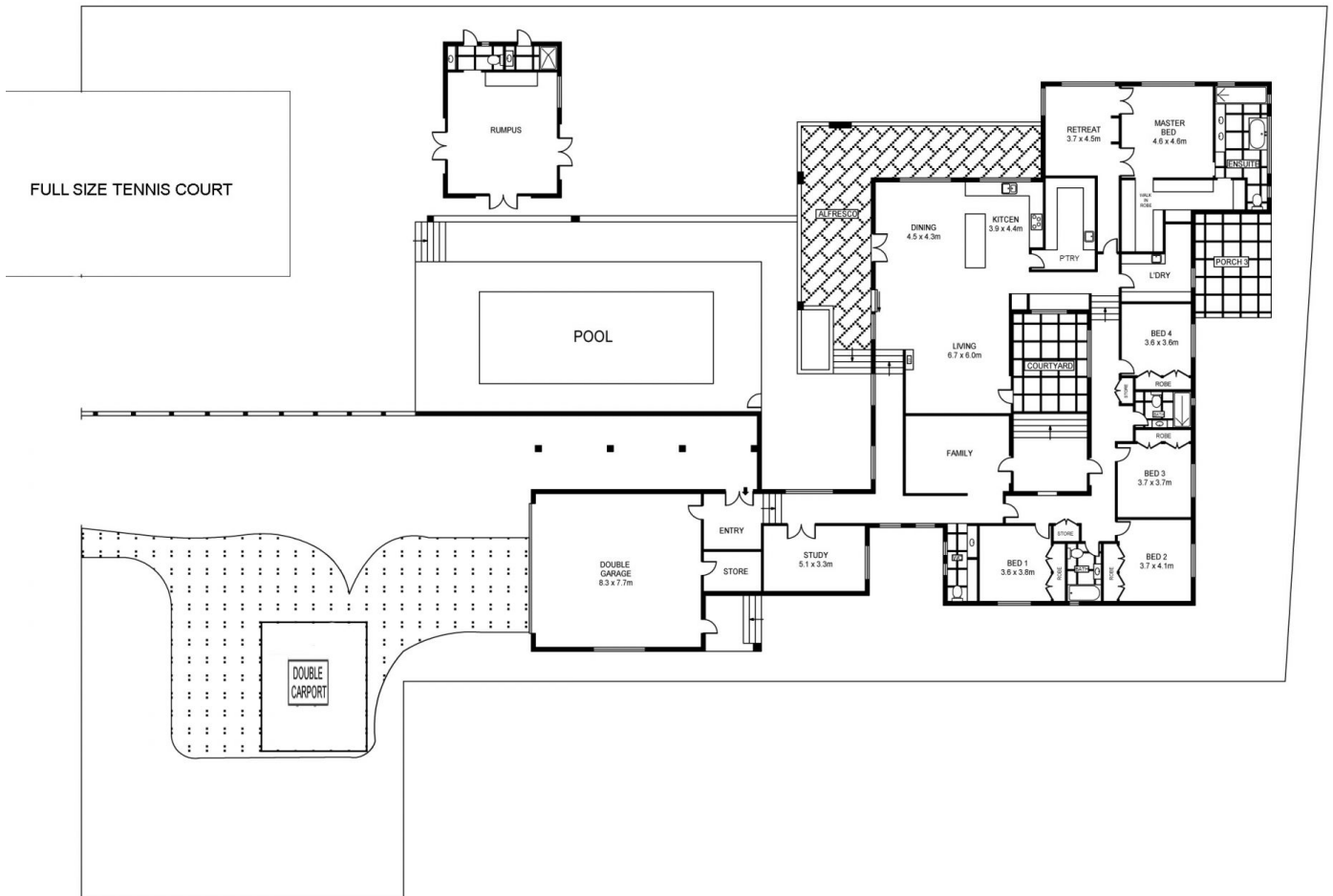
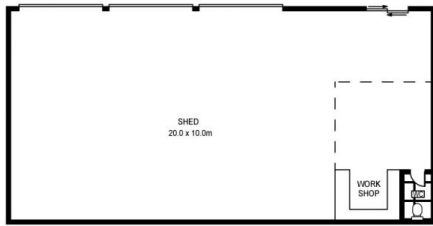
Price : \$ 1,550,000
Building Size : 502.2 sqm
Land Size : 4000 sqm
View : <https://www.dck.com.au/sale/vic/greater-bendigo-region/strathdale/residential/home/5766572>



Leonie Butler
(03) 5440 5000



Kaye Lazenby
(03) 5440 5000



SCALE (METRES)

PLANS SHOWN ONLY INDICATIVE OF LAYOUT. DIMENSIONS ARE APPROXIMATE.
Ref. No: 50561

256 McIvor Highway