



**23 Howard Street Epsom VIC**

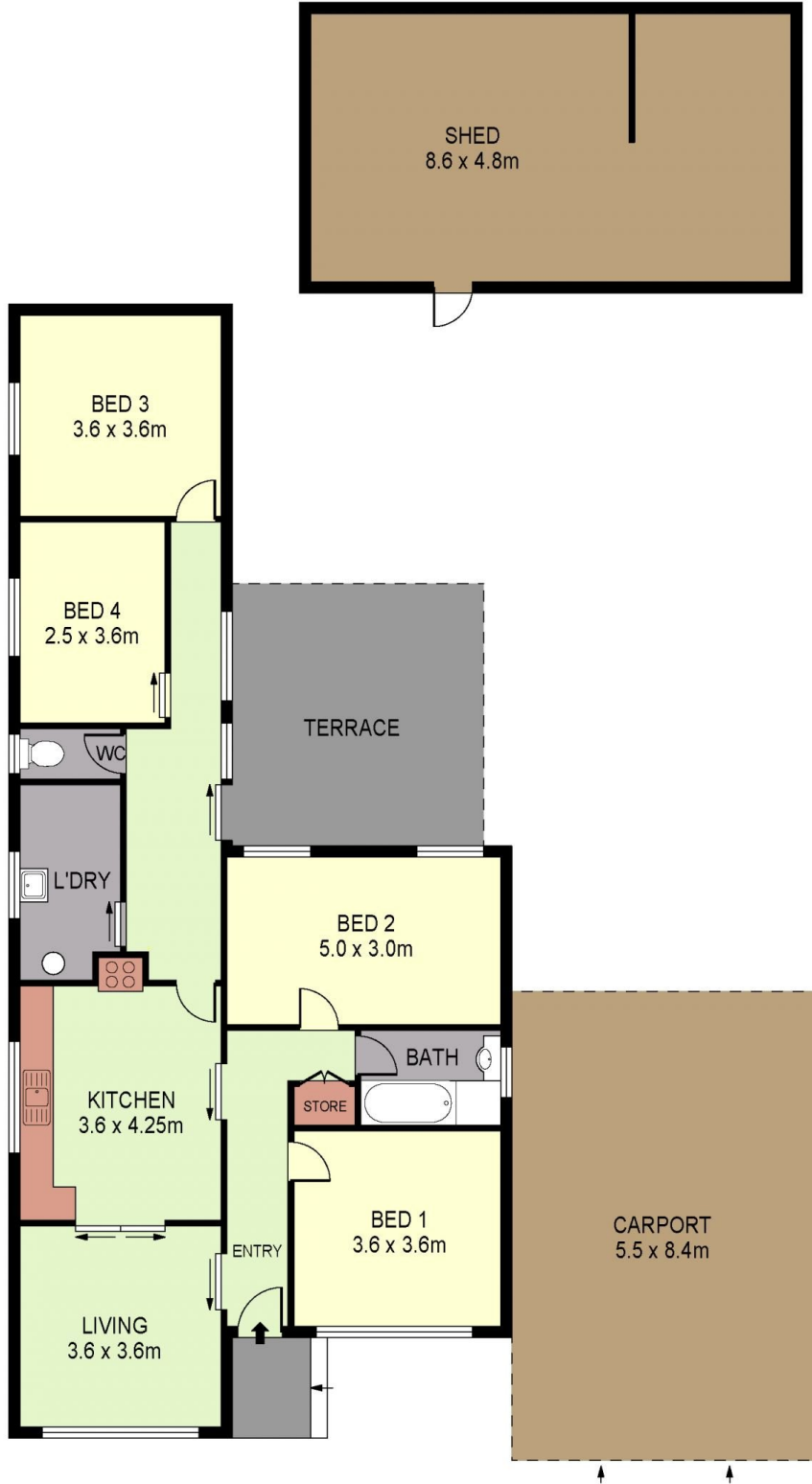
- ? PRIME DEVELOPMENT SITE IN FLOURISHING EPSOM
- ? SITUATED BETWEEN AND OPPOSITE PROPERTIES UNDER DEVELOPMENT
- ? REFURBISHED 4 BEDROOM HOME WITH POTENTIAL RENT OF \$300.00 PER WEEK.
- ? TWO TITLES (FRONT WITH HOUSE AND REAR)
- ? APPROX. 2827m2 OF LAND

Ideally situated opposite Epsom Village this property provides the opportunity for those looking for a property to run their own business, those looking to develop now or those looking to land bank for the future with the benefit of a residential rental income.

**Price** : \$ 445,000  
**Land Size** : 2827 sqm  
**View** : <https://www.dck.com.au/sale/vic/greater-bendigo-region/epsom/commercial/development/5766726>



**Matt Bowles**  
5440 5011



SCALE (METRES)

PLANS SHOWN ONLY INDICATIVE OF LAYOUT. DIMENSIONS ARE APPROXIMATE.  
Ref. No: 68317

INT : 113m<sup>2</sup>  
CARPORT : 46m<sup>2</sup>

23 HOWARD STREET