



11 Kristy Drive Spring Gully VIC

4 3 3

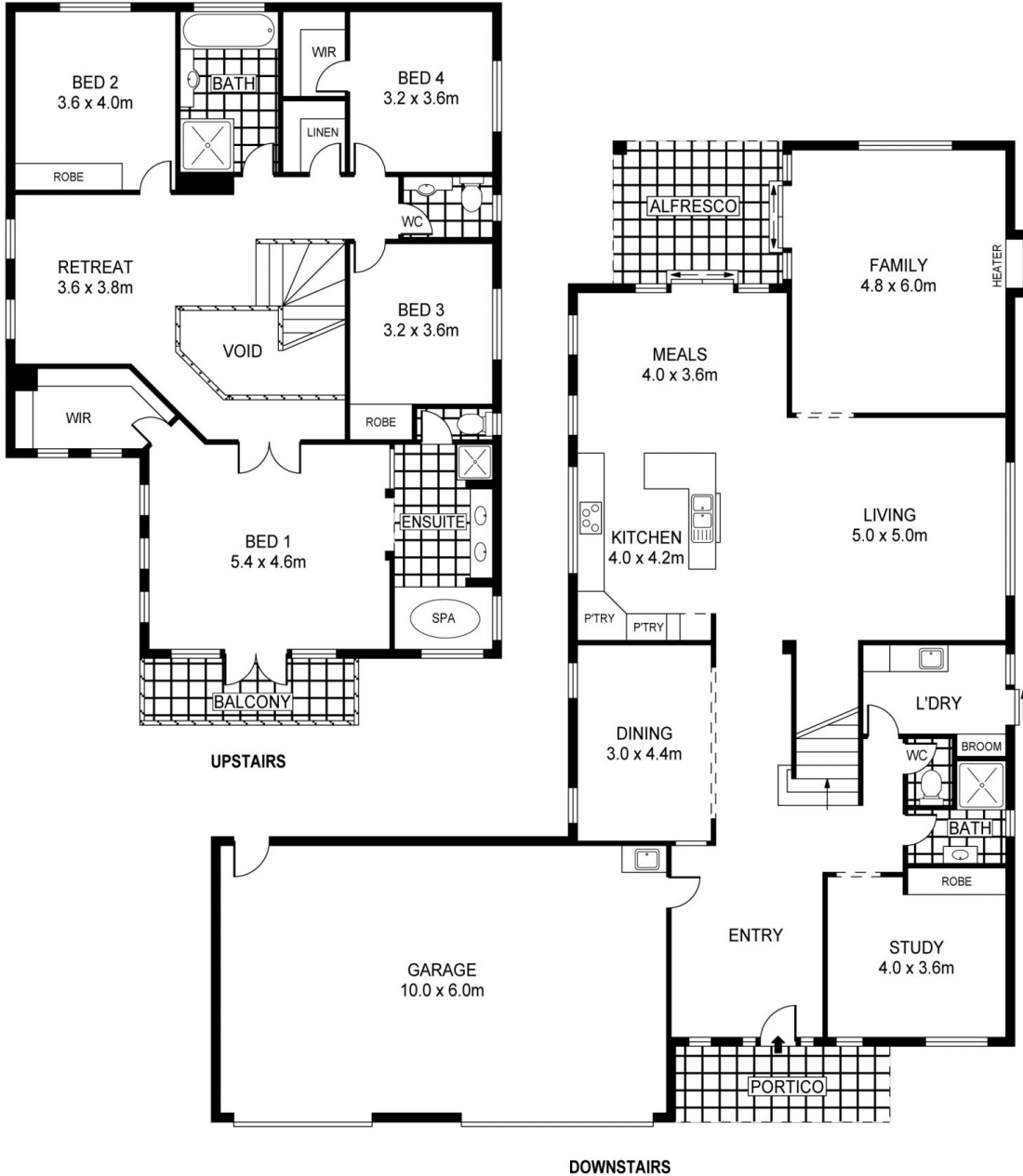
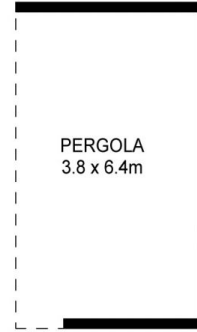
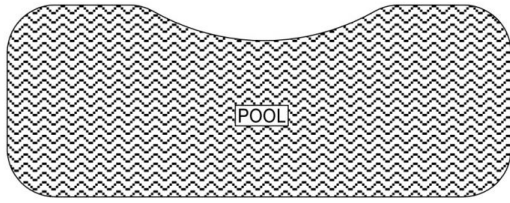
Beautiful inside and out, this striking light filled residence offers a floorplan that suggests refined comfort and practicality. A wonderfully private retreat, the family home comprises quality accommodation including multiple living areas with a sleek, modern interior. The wide timber staircase just inside the entry hall is a real feature and despite its grandeur, this is a remarkably relaxed family home with huge rooms that offer plenty of space on both levels for everyone. Downstairs features open living and relaxed meals at its heart, together with a sublime 'foodies' kitchen complimented by loads of cupboard and pantry space, breakfast bar and granite benchtops. In addition, there's a huge adjoining rumpus room, all of which is accentuated by sun soaked views over the alfresco, sparkling pool, spa and separate veiled cabana area. Further downstairs accommodation comprises formal dining, office space, guests' bathroom, separate toilet and

Price : \$ 745,000

View : <https://www.dck.com.au/sale/vic/greater-bendigo-region/spring-gully/residential/house/5766730>



Kaye Lazenby
(03) 5440 5000



SCALE (METRES)

PLANS SHOWN ONLY INDICATIVE OF LAYOUT. DIMENSIONS ARE APPROXIMATE.
Ref. No: 56843

11 KRISTY DRIVE