



9 Lorne Terrace Flora Hill VIC

3 2 2

This as-new, two-storey townhouse located close to the university precinct was designed to maximise light & contemporary sophistication while offering a secure, maintenance-free lifestyle.

The quality-built residence delivers an attractive facade & a well-appointed interior where the ground floor includes open-plan living/dining/kitchen area flowing seamlessly to a timber decked courtyard. The impressive kitchen is kitted out with 900mm stainless steel gas/electric free standing oven, dishwasher, stone-topped benches, island/breakfast bar & good storage options including soft-close cabinetry and pantry cupboard.

The ground level also encompasses a study nook, powder room & full laundry with direct access from the auto double garage.

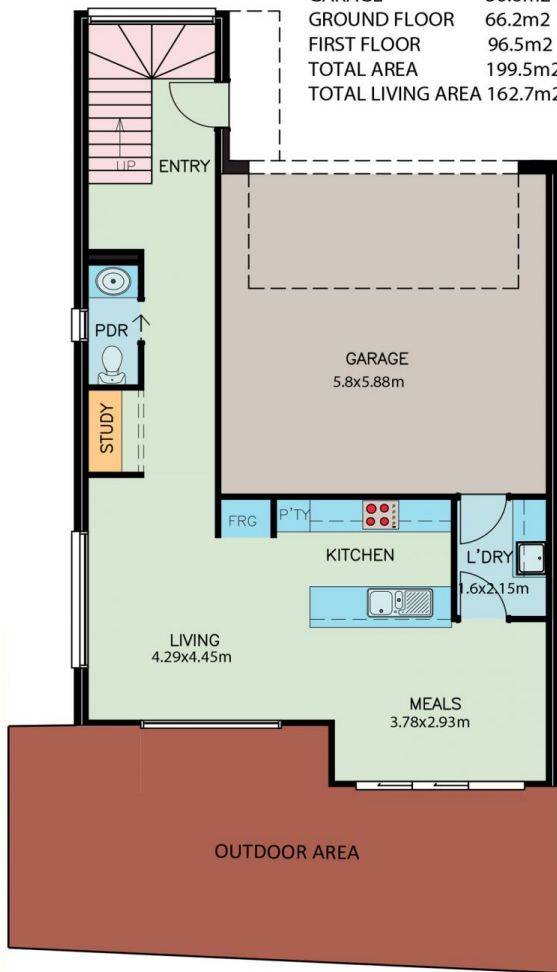
A honey-coloured Tasmanian oak staircase winds to the spacious first floor lounge, second study nook, three

Price : \$ 412,500
Land Size : 201 sqm
View : <https://www.dck.com.au/sale/vic/greater-bendigo-region/flora-hill/residential/townhouse/5766768>

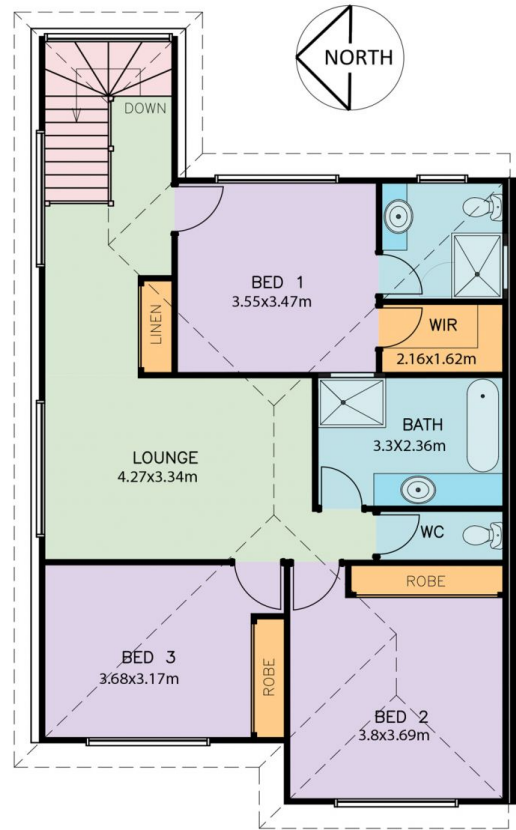


Kaye Lazenby
(03) 5440 5000

FLOOR AREA	
GARAGE	36.8m ² 3.9sqsq
GROUND FLOOR	66.2m ² 7.3sqsq
FIRST FLOOR	96.5m ² 10.6sqsq
TOTAL AREA	199.5m ² 21.9sqsq
TOTAL LIVING AREA	162.7m ² 18.0sqsq



GROUND FLOOR



FIRST FLOOR