



3 McMeeken Way Epsom VIC

3 2 2

"Walk right in, sit right down" is the tune this affordable brick veneer home is playing. Whether you are just starting out on your home ownership journey, scaling down or somewhere in between; this well presented brick veneer will not disappoint.

It features the main bedroom incorporating walk-in robe and ensuite positioned off the tiled entry hall before it opens up to expansive, north-facing living, dining and kitchen areas. The kitchen will entice keen cooks with stainless steel, gas/electric cooking, dishwasher, double pantry cupboard and breakfast bar for casual meals. The dining area includes sliding doors to a paved alfresco area while the living area overlooks the lush lawns of the fully-fenced backyard.

A separate wing is home to the remaining two bedrooms, (with robes), main bathroom, laundry and wc. Comfort is assured with gas heating and ducted evaporative cooling

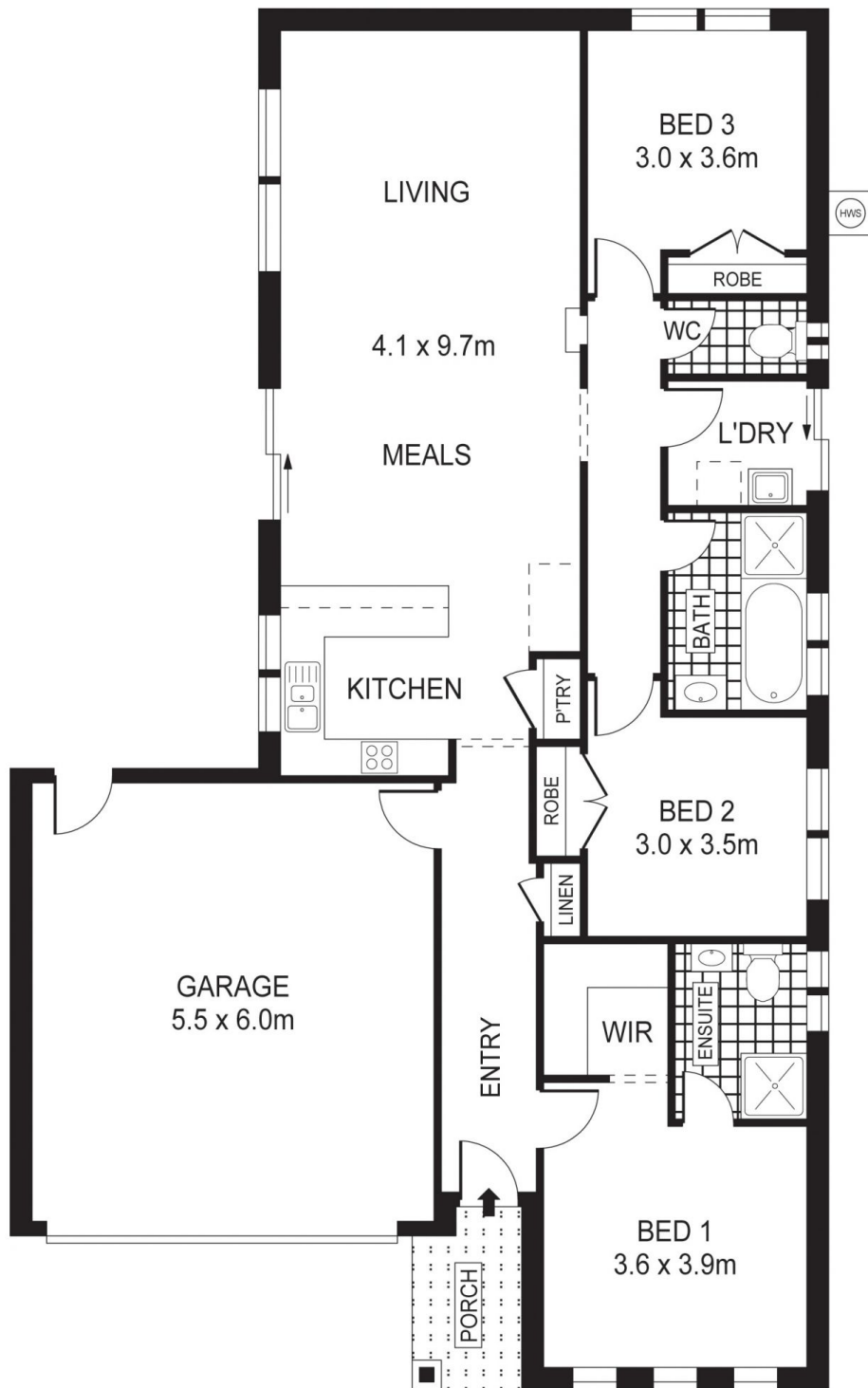
Land Size : 588 sqm
View : <https://www.dck.com.au/sale/vic/greater-bendigo-region/epsom/residential/house/5766881>



Justin Pell
(03) 5440 5000



Marc Cox
(03) 5440 5000



PLANS SHOWN ONLY INDICATIVE OF LAYOUT. DIMENSIONS ARE APPROXIMATE.
 Ref. No: 58079

3 MCMEEKEN WAY