



### 16 Keogh Drive Spring Gully VIC

3 2 2

Interesting, unique and offers a relaxed lifestyle.

This contemporary double-storey home located in the popular Palm Springs Estate has so much to offer. The fantastic design incorporates tiled Entrance, Lounge, well appointed Galley Style Kitchen and adjoining Family/Dining room opening onto a private courtyard ideal for entertaining. Downstairs there are two Bedrooms, two way Bathroom and laundry whilst upstairs is the Master Bedroom suite complete with walk-in Robe, Ensuite and Balcony. The home boasts quality fittings & furnishings throughout and has ducted heating & cooling, ducted vacuum system and security system. In addition an oversized double lock-up garage with direct access to the house, garden shed plus low maintenance landscaping. An impressive property

**Price** : \$ 415,000

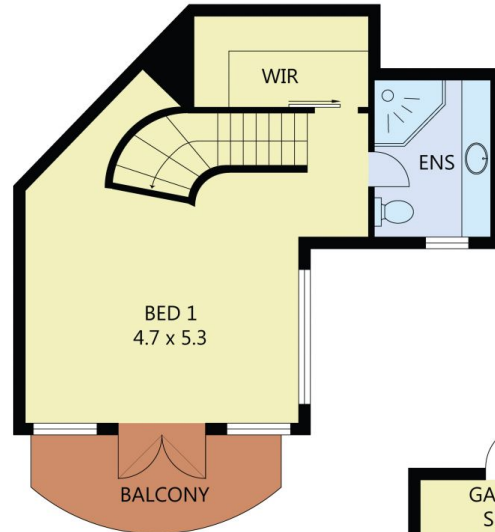
**View** : <https://www.dck.com.au/sale/vic/greater-bendigo-region/spring-gully/residential/house/5767091>



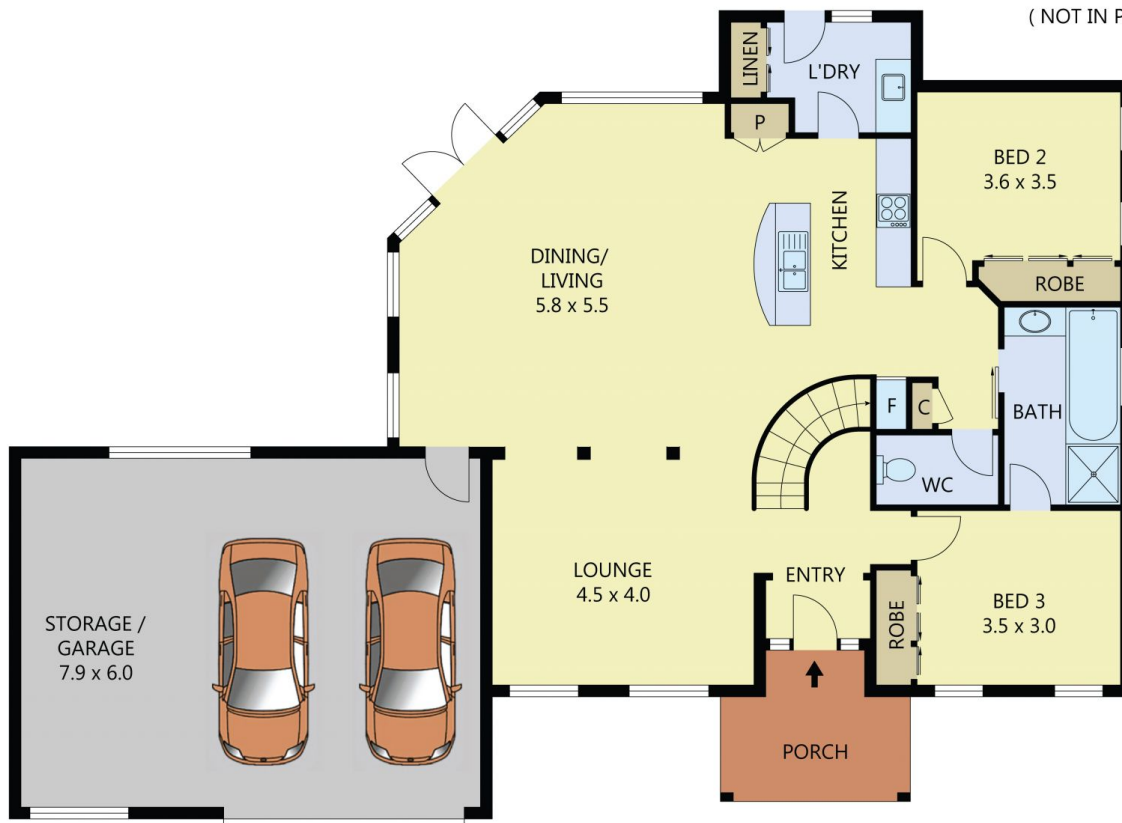
**Justin Pell**  
(03) 5440 5000



**Marc Cox**  
(03) 5440 5000

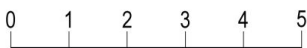


FIRST FLOOR



GROUND FLOOR

SHED	-	5m <sup>2</sup>
BALCONY	-	6m <sup>2</sup>
PORCH	-	7m <sup>2</sup>
STORAGE/GARAGE	-	47m <sup>2</sup>
RESIDENCE	-	157m <sup>2</sup>



Scale in metres. Indicative only. Dimensions are approximate. All information contained herein is gathered from sources we believe to be reliable. However we cannot guarantee its accuracy and interested parties should rely on their own enquiries.

# 16 Keogh Drive, Spring Gully