



### 410 Napier Street Bendigo VIC

3 1 1

Older style weatherboard and fibro home offers a great opportunity for a first home buyer or renovator to live in and improve down the track or for a developer to demolish and develop straight away.

Set on approx. 880 square metres of elevated land, it offers two bedrooms with robes and a large 3rd bedroom (formerly the lounge) with tapestry brick fireplace and bay window.

Bathroom, kitchen with gas cooking, open living dining/living area and laundry with gas heating, ceiling fans and air conditioner for comfort.

Outside there's a rear verandah overlooking the big backyard, single garage and ample off street parking.

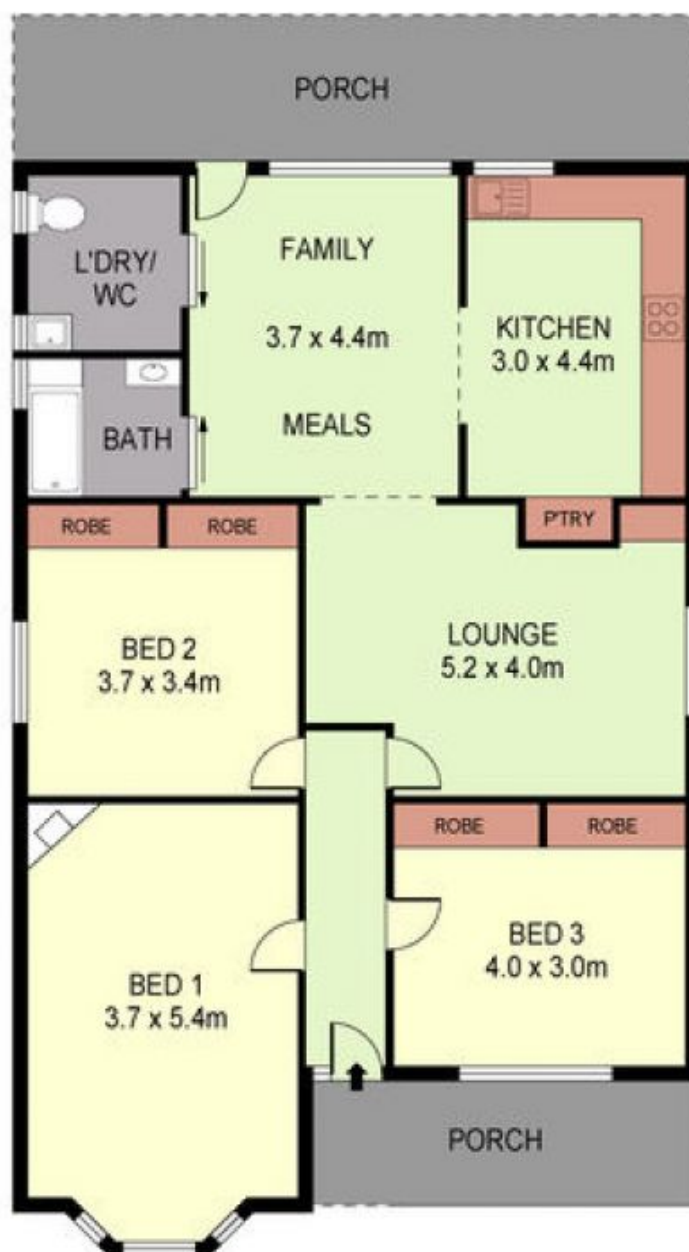
Current long term (11yr) tenant is hoping an investor will love it and let her stay on (Rent approx \$225 per week)

Great position oppposite Weeroona College and bus stop, close to Lake Weeroona and CBD.

**Price** : \$ 235,000  
**Land Size** : 880 sqm  
**View** : <https://www.dck.com.au/sale/vic/greater-bendigo-region/bendigo/residential/house/5767195>



**Leonie Butler**  
(03) 5440 5000



PLANS SHOWN ONLY INDICATIVE OF LAYOUT. DIMENSIONS ARE APPROXIMATE.  
Ref. No. 96325



410 NAPIER STREET