



2/15 Ellimata Court Strathdale VIC

2 1 1

Resting on a corner allotment, the location of this well-presented unit is central to Strathdale with all essential services within easy reach. Offering open living & meals bathed in sunlight, well-equipped kitchen, laundry plus 2 roomy robed bedrooms, with bathroom & separate toilet located in between making it easy to access from either room. Neutral décor & brand new carpet throughout, kept comfortable year-round with split system heating/cooling. Flourishing front gardens, single lock-up garage & private, easy-care backyard complete the package, nestled amidst other quality homes within a peaceful neighbourhood. The convenience & airiness of this property will allow you to enjoy life & offer you time to appreciate the easy living that comes from owning this unit.

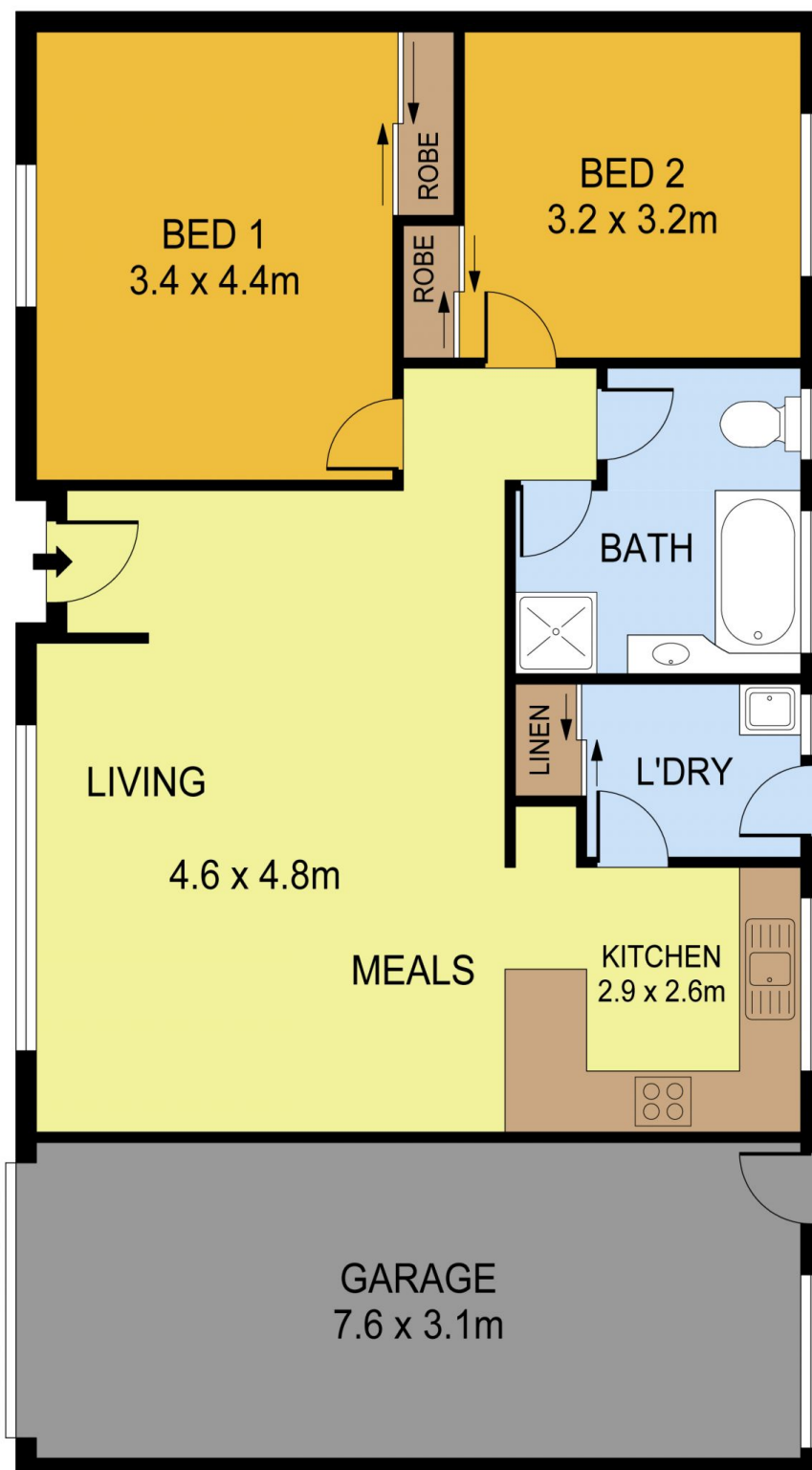
View : <https://www.dck.com.au/sale/vic/greater-bendigo-region/strathdale/residential/house/5767212>



Kaye Lazenby
(03) 5440 5000



Leonie Butler
(03) 5440 5000



PLANS SHOWN ONLY INDICATIVE OF LAYOUT. DIMENSIONS ARE APPROXIMATE.
Ref. No. 66481

15 ELLIMATA COURT