



## 14 Valentine Street Bendigo VIC

4 2 1

Originally built as a solid brick duplex circa 1880, this stunning heritage home has undergone a number of renovations in its time. Possibly the first, and most obvious, was in 1910 when the front facade was altered from Victorian terrace to the current Edwardian style.

Most recently, a new roof was added in 2013 followed by a major overhaul in 2014 when the lower level was completely transformed to bring it into the 21st century.

Behind the picket fence and welcoming rose arbour, a cottage garden full of sensory delights and manicured hedges border the path to the tiled front verandah.

Inside, the entry foyer features polished Baltic pine flooring, 3.5m decorative ceilings and lead light-glazed niche window. The formal lounge includes a feature box bay window, open fireplace and timber over mantle with matching fireplaces in bedrooms 2, 3 and 4/office. A light-filled vestibule/study nook at the end of the hallway

**Land Size** : 650 sqm

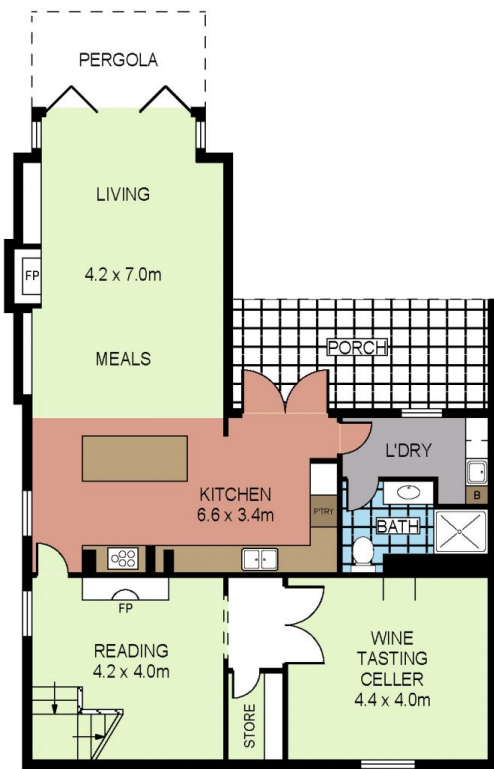
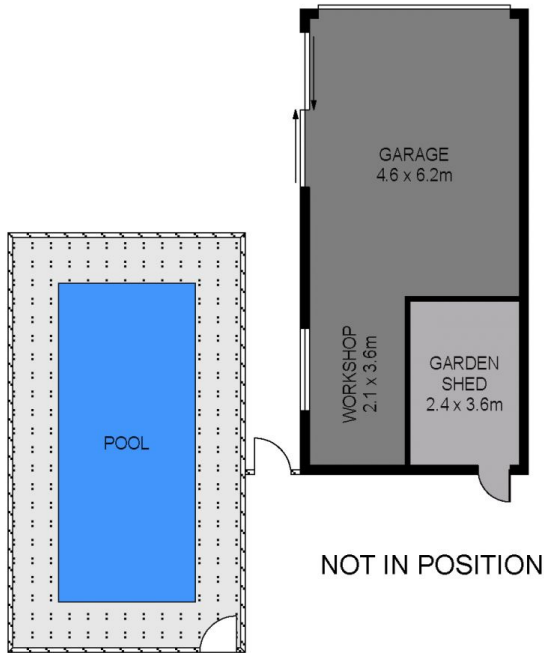
**View** : <https://www.dck.com.au/sale/vic/greater-bendigo-region/bendigo/residential/house/5767230>



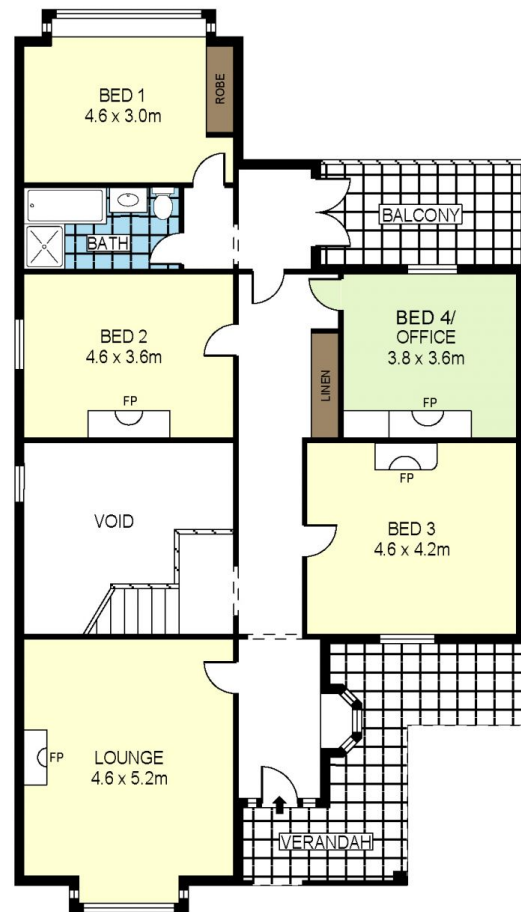
**Kaye Lazenby**  
(03) 5440 5000



**Leonie Butler**  
(03) 5440 5000



LOWER LEVEL



UPPER LEVEL



SCALE (METRES)

PLANS SHOWN ONLY INDICATIVE OF LAYOUT. DIMENSIONS ARE APPROXIMATE.  
Ref. No: 67482



14 VALENTINE STREET