



14 Philpot Street Long Gully VIC

3 2 2

If you're looking for a taste of trendy Melbourne, this recent renovation gets pretty close. The front portico opens into a surprisingly modern and wide central hallway with high quality sustainable wood flooring and a light white colour scheme. The front two bedrooms are good-sized with big forward windows and ceiling fans, while further on down the hall is the stylish family bathroom with a shower, vanity and mirrored cabinetry as well as the Euro laundry.

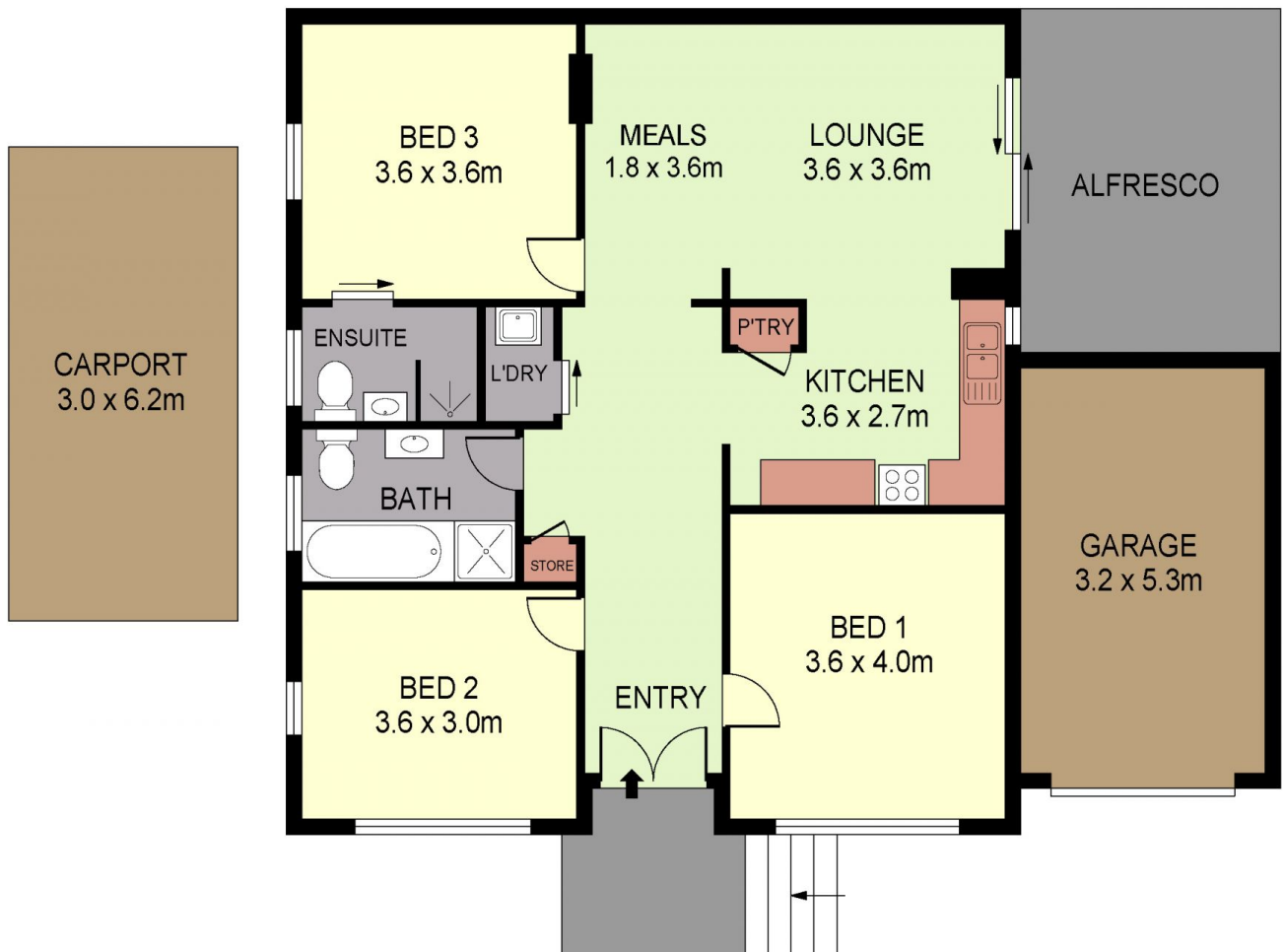
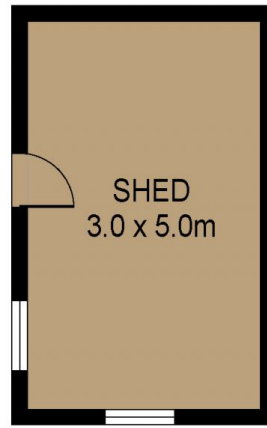
Beyond this is the main bedroom featuring a happy, sparkling ensuite with a walk-in shower that is a fabulous place to start the day, while the alfresco area outside the open-plan kitchen, dining and living is the perfect place to end the day with a glass of wine in hand.

The dining features a split system for heating & cooling, while the kitchen is extremely modern, with a lovely matching splashback and benchtop, four-burner cooktop, dishwasher and an open timber feature shelf that is

Price : \$ 285,000
Land Size : 657 sqm
View : <https://www.dck.com.au/sale/vic/greater-bendigo-region/long-gully/residential/house/5767270>



Kaye Lazenby
(03) 5440 5000



PLANS SHOWN ONLY INDICATIVE OF LAYOUT. DIMENSIONS ARE APPROXIMATE.
Ref. No: 67627

INT : 95m²
GARAGE : 17m²
SHED : 15m²
CARPORT : 19m²

14 PHILPOT STREET