



**47 Alexander Close Strathfieldsaye VIC**

4 2 2

Situated in family friendly Strathfieldsaye and surrounded by quality properties is this fantastic family home only 10 years old. Offering an abundance of features the home comprises plenty of space and living options for the growing family.

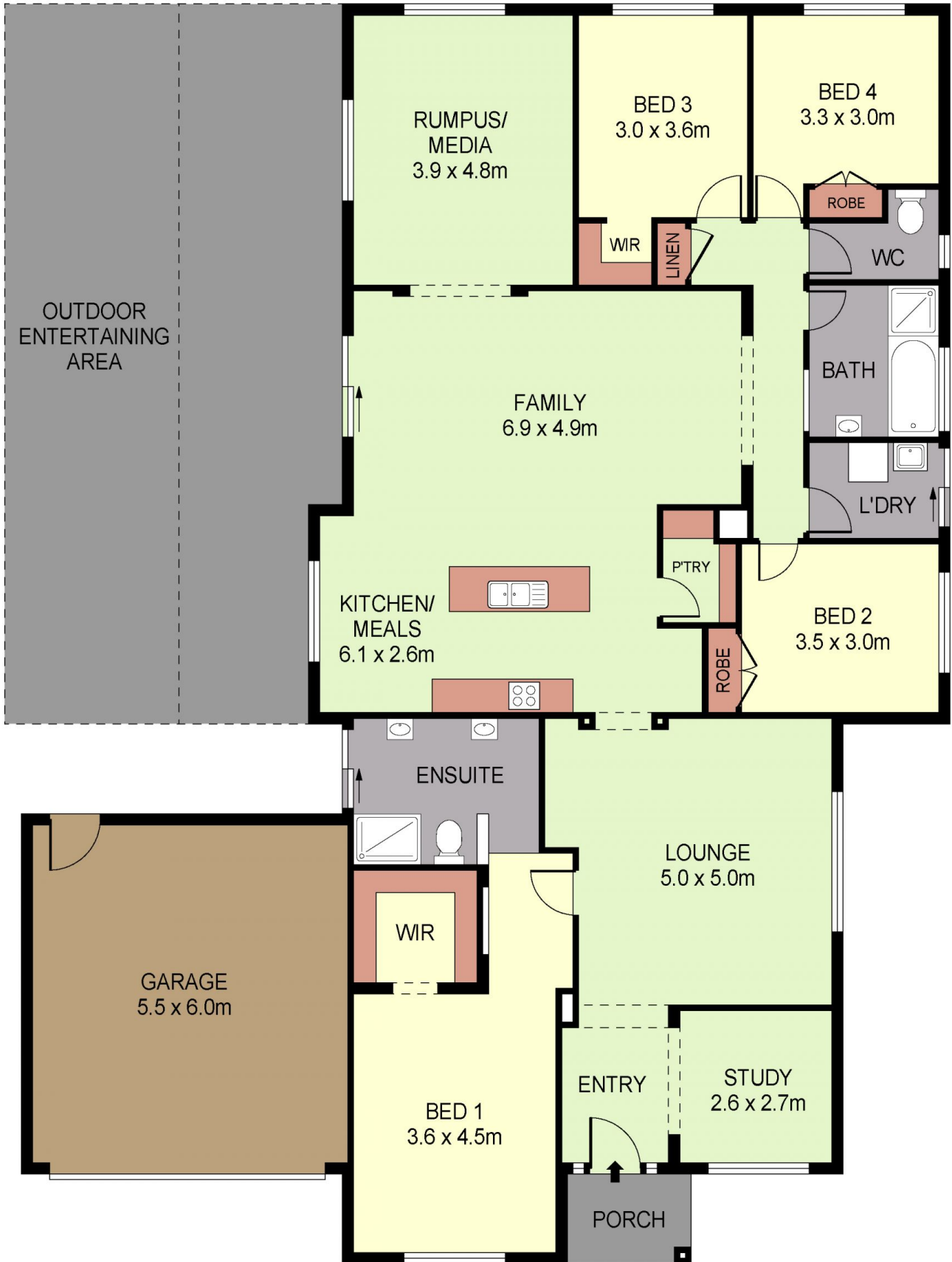
Solid timber double entry doors lead from a porcelain tiled entrance to a study on the right and a formal lounge room with views to the side garden. To the left is a large master bedroom with generous walk in robe and ensuite with double vanity basins, over sized shower and sliding door that leads to outside deck area

The lounge leads into a large open plan kitchen, meals and living area. The kitchen is complete with a large Caesarstone island bench, new electric oven, gas hot plates, dishwasher and spacious walk in pantry. Large built

**Price** : \$ 481,000  
**Building Size** : 24 sqm  
**Land Size** : 903.6 sqm  
**View** : <https://www.dck.com.au/sale/vic/greater-bendigo-region/strathfieldsaye/residential/house/5767288>



**Matt Bowles**  
5440 5011



PLANS SHOWN ONLY INDICATIVE OF LAYOUT. DIMENSIONS ARE APPROXIMATE.  
 Ref. No: 67852

47 ALEXANDER CLOSE