



5 Fellows Place Maiden Gully VIC

5 2 2

Have you been looking for a fully optioned family home in one of Maiden Gully's best Courts? Relax your search is over.

Set amongst some truly impressive homes on a lovely wide and slightly elevated block of 1030m² this spacious home offers a perfect environment for modern living.

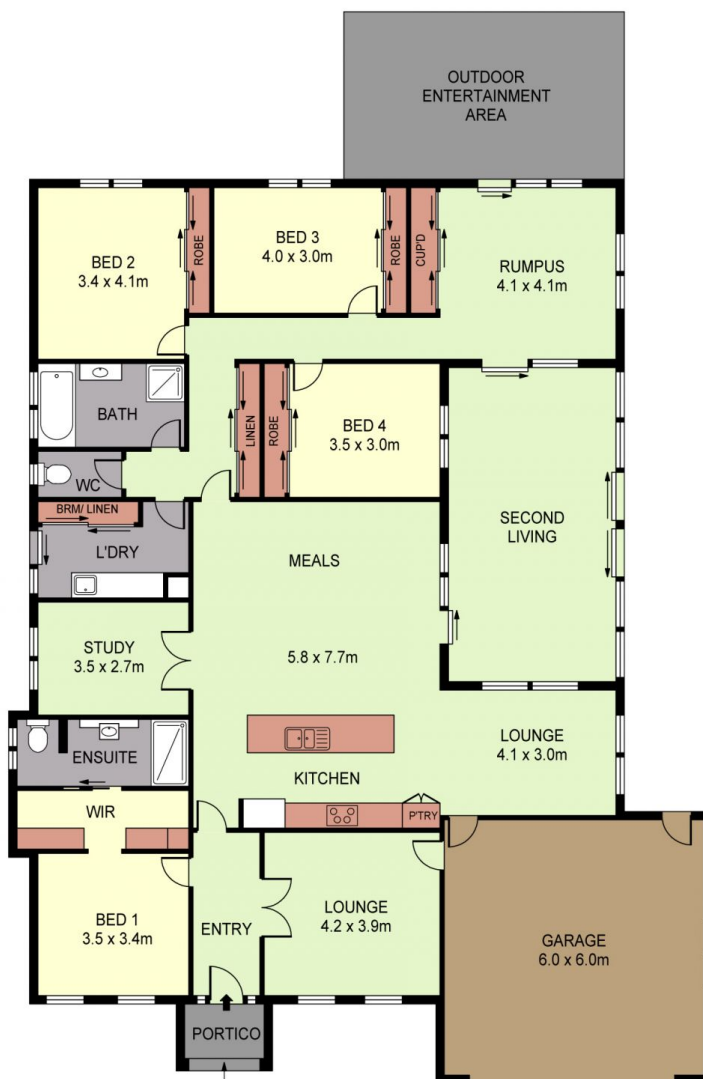
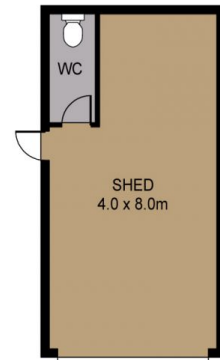
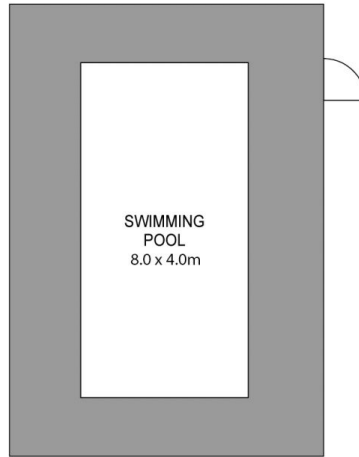
Living areas abound and include separate formal lounge, a spacious open plan kitchen/family /dining area, separate rumpus and the added bonus of an additional living area/sunroom all climate controlled with ducted gas heating and evaporative cooling.

Zoned for family living the master suite including his and hers walk in robe and ensuite, has direct access across the front entrance to the Separate formal lounge or Parents retreat, while the 3 other bedrooms all with BIR's lead to the separate Rumpus, while the separate study (or potential 5th Bedroom) opens onto the kitchen/living area.

Price : \$ 676,000
Land Size : 1000 sqm
View : <https://www.dck.com.au/sale/vic/greater-bendigo-region/maiden-gully/residential/house/5767334>



Matt Bowles
5440 5011



SCALE (METRES)

PLANS SHOWN ONLY INDICATIVE OF LAYOUT. DIMENSIONS ARE APPROXIMATE.
Ref No 68723

INT : 250m²
GARAGE : 36m²
SHED : 32m²

5 FELLOWS PLACE