



11 Janelle Drive Maiden Gully VIC

3 2 4

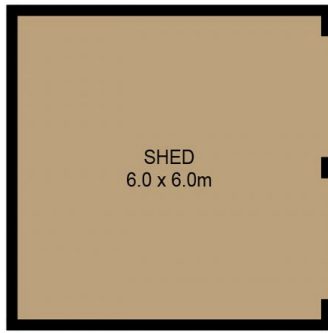
Located on a large 1553sqm allotment in popular Maiden Gully and surrounded by quality new homes, this well-presented, one-owner home is a standout. The owners clearly have an eye for style and were thinking outside the square when they designed their modern family classic - the result is a mercurial mix of light, comfort and flexibility with clever use of space.

Price : \$ 567,500
Land Size : 1553 sqm
View : <https://www.dck.com.au/sale/vic/greater-bendigo-region/maiden-gully/residential/house/5767476>

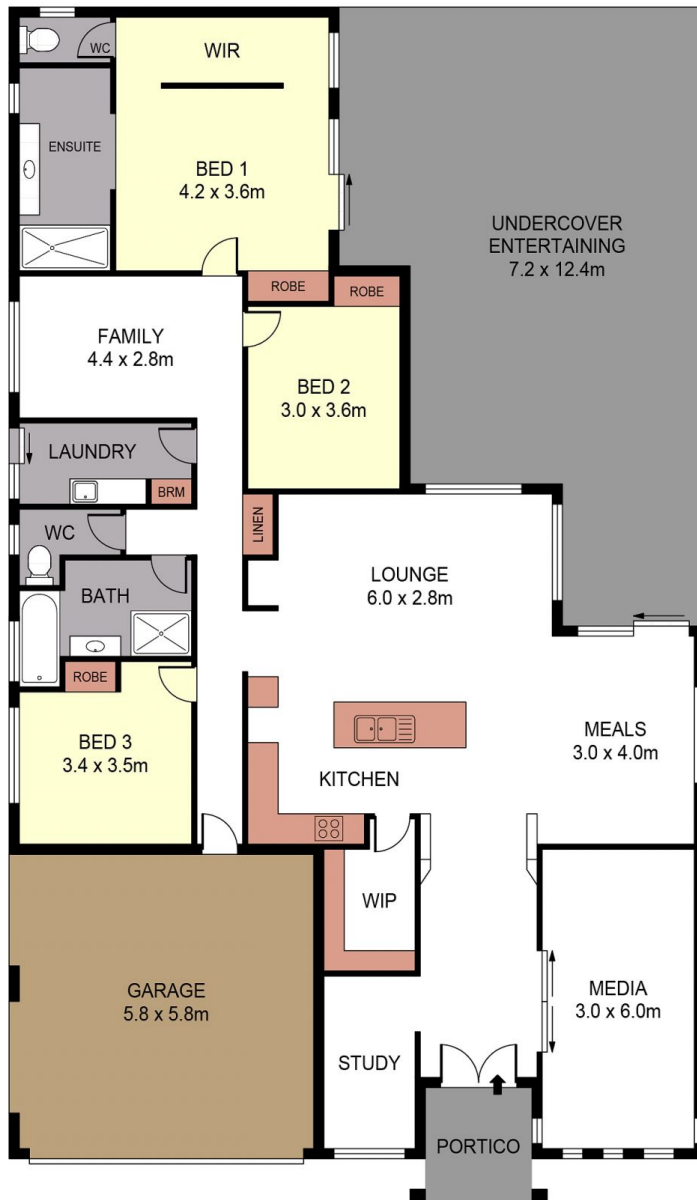
A light-filled foyer awaits inside the double front doors where quality floor tiles flow through to the living areas. There's three good-sized bedrooms, a study off the entry hall and three flexible living areas. The main suite incorporates walk-through robe, spacious ensuite and separate WC, while remaining bedrooms are found nearby the family bathroom and a dedicated living/rumpus area for the younger set.



Justin Pell
(03) 5440 5000



NOT IN POSITION



SCALE (METRES)

PLANS SHOWN ONLY INDICATIVE OF LAYOUT. DIMENSIONS ARE APPROXIMATE.
Ref. No: 72884



INT : 206m²
GARAGE : 37m²
SHED : 40m²

11 JANELLE DRIVE