



23/1 Edwards Road Kennington VIC

3 2 2

Superbly positioned within the St Aidans Park complex this spacious two-storey residence includes two ground-floor living areas with a light-filled lounge at the front of the welcoming entry.

View : <https://www.dck.com.au/lease/vic/greater-bendigo-region/kennington/residential/townhouse/5767573>

Polished hardwood floors and zoned reverse-cycle heating/cooling flow throughout with the second living/meals area adjoining the kitchen.

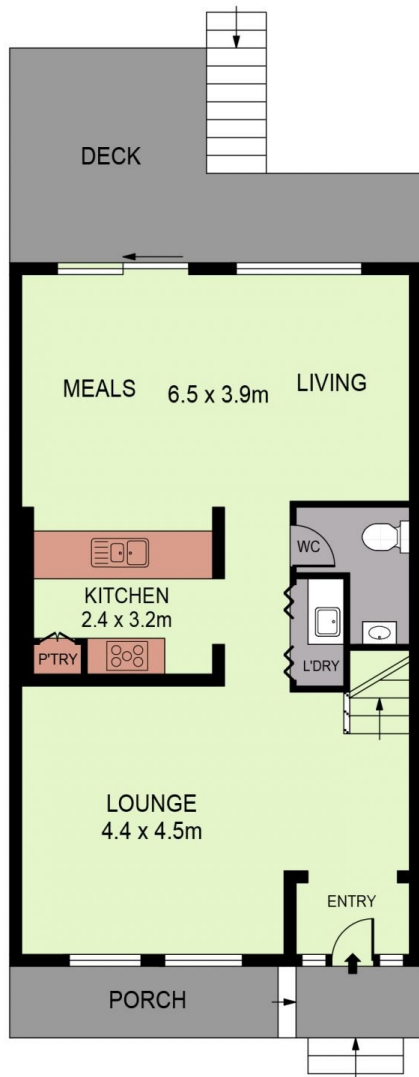
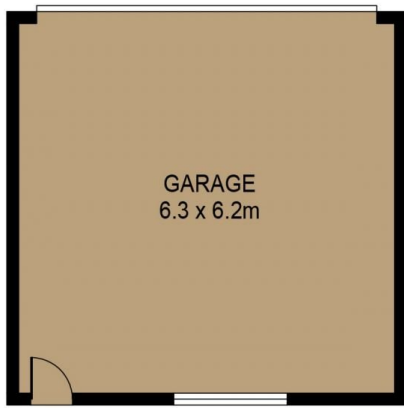
Enjoy access to a north-facing timber alfresco deck overlooking the easy-care courtyard garden.

Well-equipped kitchen features granite bench top/breakfast bar, gas/electric cooking appliances, dishwasher and pantry.

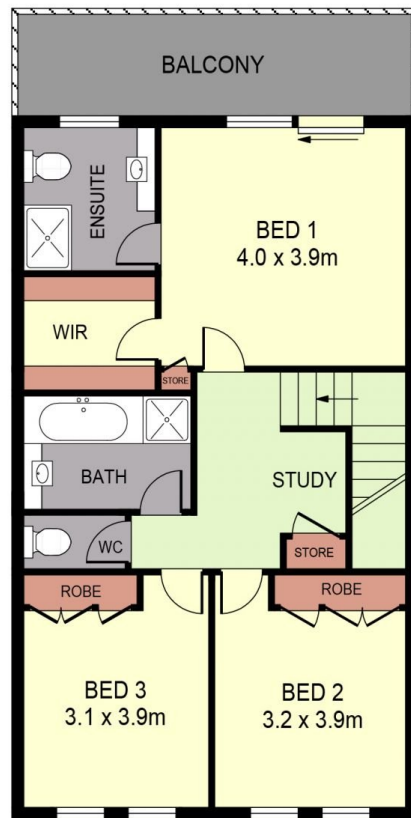
A powder room and European-style laundry complete



Paige Boston
(03) 5440 5064



GROUND FLOOR



FIRST FLOOR



PLANS SHOWN ONLY INDICATIVE OF LAYOUT. DIMENSIONS ARE APPROXIMATE.
Ref. No: 72058

INT : 147m²
GARAGE : 39m²

23/1 EDWARDS ROAD