



### 307 Bennetts Road Longlea VIC

4 2 3

Located on the border of Strathfieldsaye and Longlea and Set on approx 80,000 m2 (approx 20 acres) this rural retreat combines the best lifestyle positioning with native bush at the front and cleared land surrounding the house.

Built in old bricks from recovered from a Footscray warehouse, the unique design, exuding an understated elegance is perfectly appointed for relaxed family living and entertaining with wide verandahs on all four sides, an array of spacious living zones, four bedrooms and two bathrooms with quality inclusions throughout.

The hub of the home is the large open-plan family area designed to capture the natural light. The modern kitchen is equipped with 900mm stainless steel electric range, dishwasher, large island bench and commodious walk-in pantry.

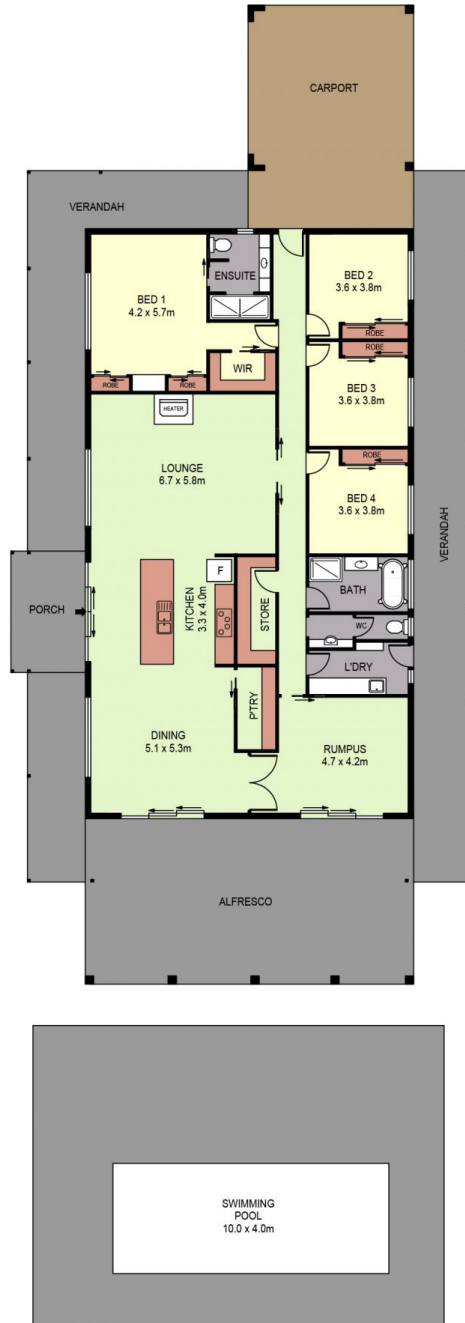
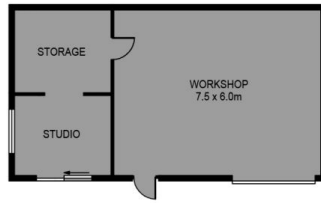
Directly off both the dining and rumpus rooms, and accessed via stacking sliding doors is the outdoor

**Price** : \$ 815,000

**View** : <https://www.dck.com.au/sale/vic/greater-bendigo-region/longlea/residential/house/5767608>



**Kaye Lazenby**  
(03) 5440 5000



SCALE (METRES)

PLANS SHOWN ONLY INDICATIVE OF LAYOUT. DIMENSIONS ARE APPROXIMATE.  
Ref. No: 75445



INT : 258m<sup>2</sup>  
WORKSHOP : 67m<sup>2</sup>

307 BENNETTS ROAD