



## 2/2 Pilcher Street Strathdale VIC

2 2 2

Do you fancy a modern lifestyle close to all the conveniences of modern life? Then you will love this contemporary and welcoming townhouse. Built by design dynamo Russell Parsons Builders, it's positioned in a secure and well-presented boutique complex. Showcasing individuality and privacy with the use of mixed ceiling heights, timber-look floors and light combined with strong lines and open spaces, the unit harmoniously blends contemporary interiors with a practical and functional layout. It includes a study inside the front entry overlooking a tranquil walled garden. Timber-look floors flow through to the living, dining and galley-style kitchen with stainless steel appliances, big island for casual meals and large glass aspect to a central sun-drenched courtyard perfect for breakfast, morning cuppa or evening glass of wine.

Large main bedroom includes ensuite, fitted walk-in robe and sliding door access to the courtyard while the

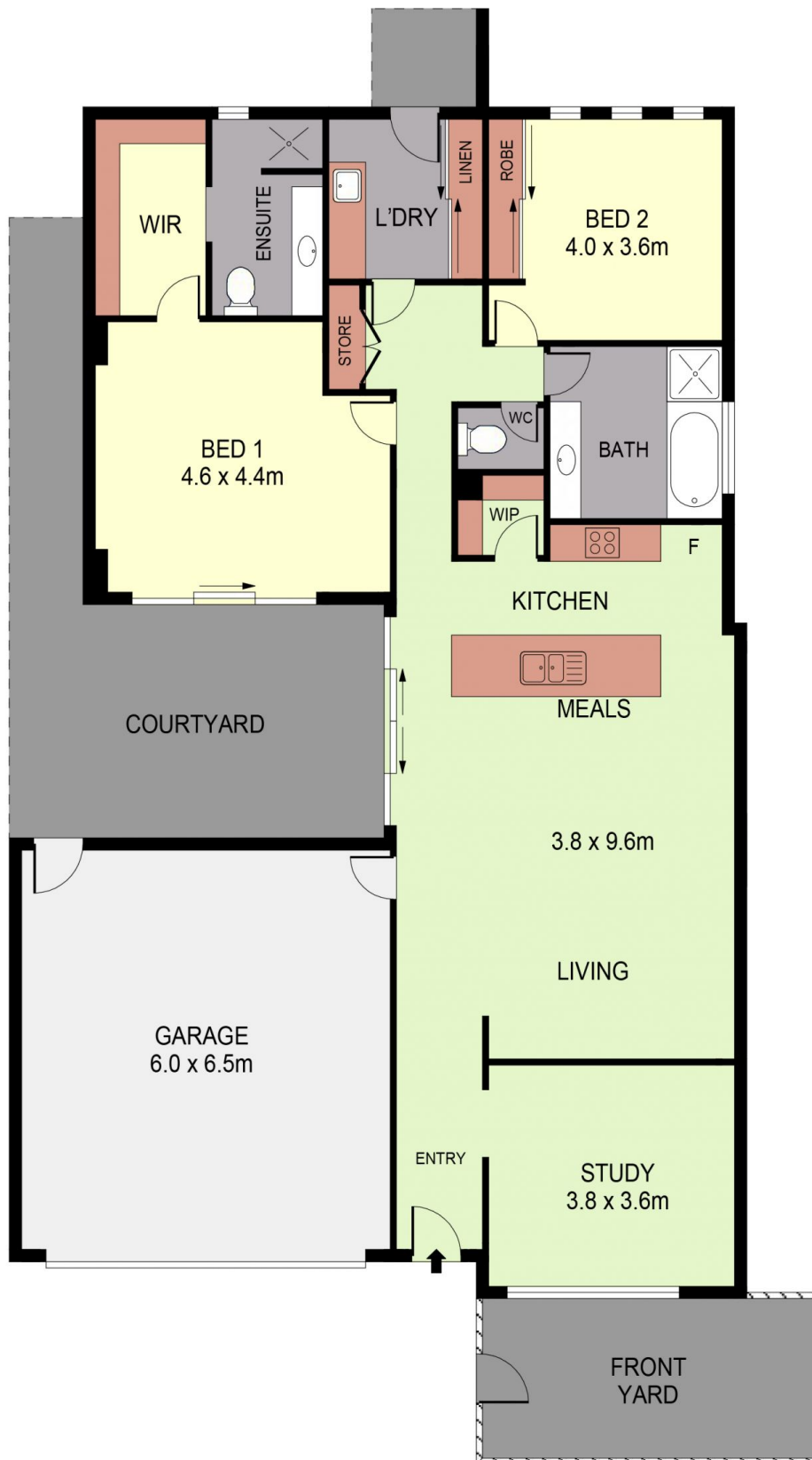
**Price** : \$ 470,000  
**Land Size** : 354 sqm  
**View** : <https://www.dck.com.au/sale/vic/greater-bendigo-region/strathdale/residential/townhouse/5767641>



**Leonie Butler**  
(03) 5440 5000



**Kaye Lazenby**  
(03) 5440 5000



0 1 2 3 4 5  
SCALE (METRES)

PLANS SHOWN ONLY INDICATIVE OF LAYOUT. DIMENSIONS ARE APPROXIMATE.  
Ref. No: 00000



INT : 144m<sup>2</sup>  
GARAGE : 39m<sup>2</sup>

2/2 PILCHER STREET