



100 Wattle Street Bendigo VIC

3 2 1

Cocooned from the world behind a tall fence and a gentle ramble of greenery, this late 1800s residence known as "Belgravia" is nestled between grand historic homes under the shadow of the majestic Sacred Heart Cathedral spire. It's current custodians lavished it with loving care and thoughtful updates while ensuring it retained its heritage charm.

The lush garden entry leads to an elevated, screen-enclosed front verandah bedecked with cast-iron lacework - the perfect place for relaxing with a morning coffee or evening drinks.

Inside, the central hallway boasts bespoke tessellated tiles underfoot with high ceilings and decorative cornice overhead.

The main bedroom includes a walk-through robe to a renovated ensuite complete with twin vanities, bidet, WC, open shower, heated towel rail and more tessellated floor

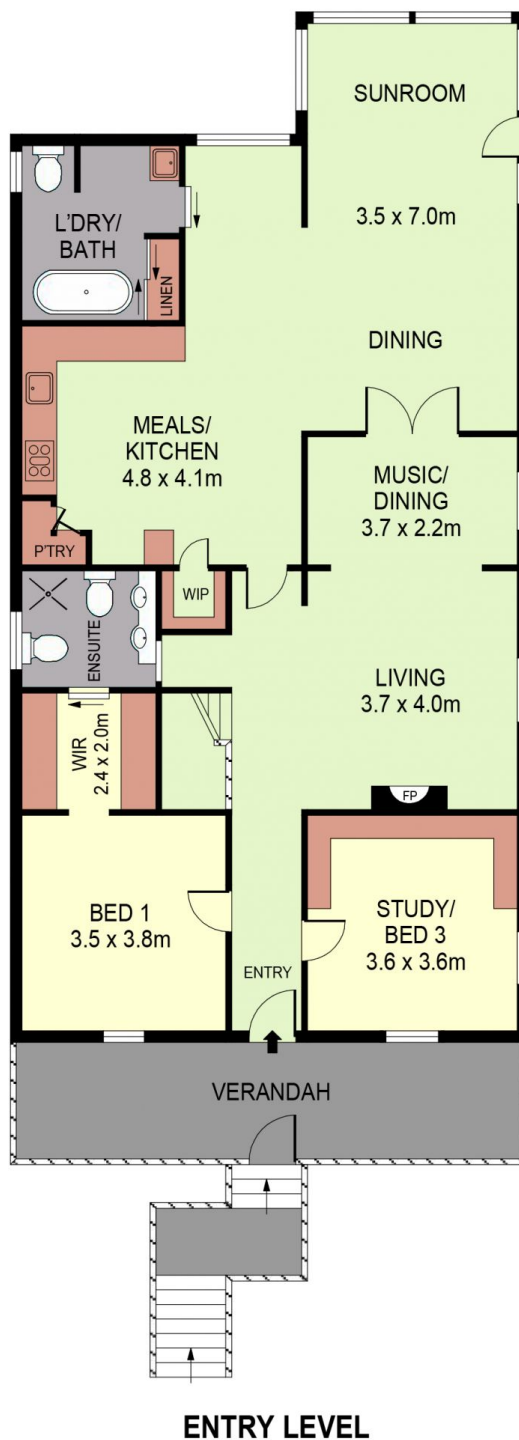
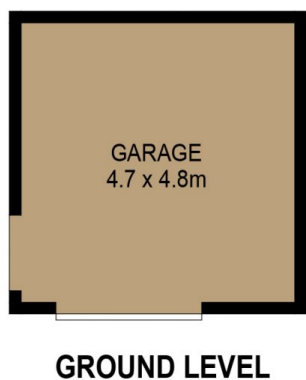
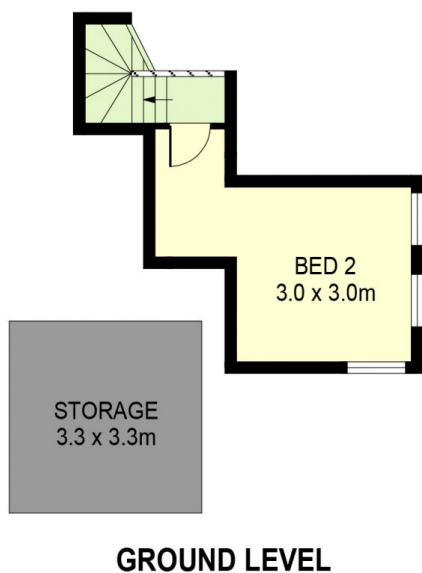
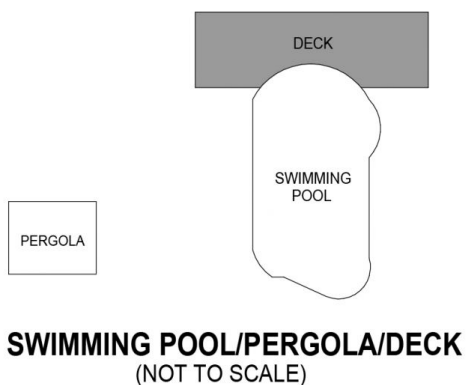
Price : \$ 750,000
Land Size : 445 sqm
View : <https://www.dck.com.au/sale/vic/greater-bendigo-region/bendigo/residential/house/5767795>



Kaye Lazenby
(03) 5440 5000



Leonie Butler
(03) 5440 5000



PLANS SHOWN ONLY INDICATIVE OF LAYOUT. DIMENSIONS ARE APPROXIMATE.
Ref. No: 00000



INT : 152m²
GARAGE : 23m²

100 WATTLE STREET