

67 Curtin Street Flora Hill VIC

3 1 2

Set on a slightly elevated block with views across the city from the front step, this home is a 1960's classic. Featuring large separate lounge with gas heater, separate, eat in kitchen with wall mounted air conditioner, three large bedrooms all with BIR's, separate sunroom/study and three piece bathroom.

This three bedroom home is set on a block of approximately 600 sq.m with a tandem garage plus workshop and spacious, grassed yard.

BSE, Latrobe University and One Tree Hill are only a short stroll, or bike ride from this property.

This home is ideally positioned.

Due to the COVID-19 pandemic & current government restrictions, we will be conducting private inspections for pre-approved applicants. Should you wish to submit a rental application for this property please paste the

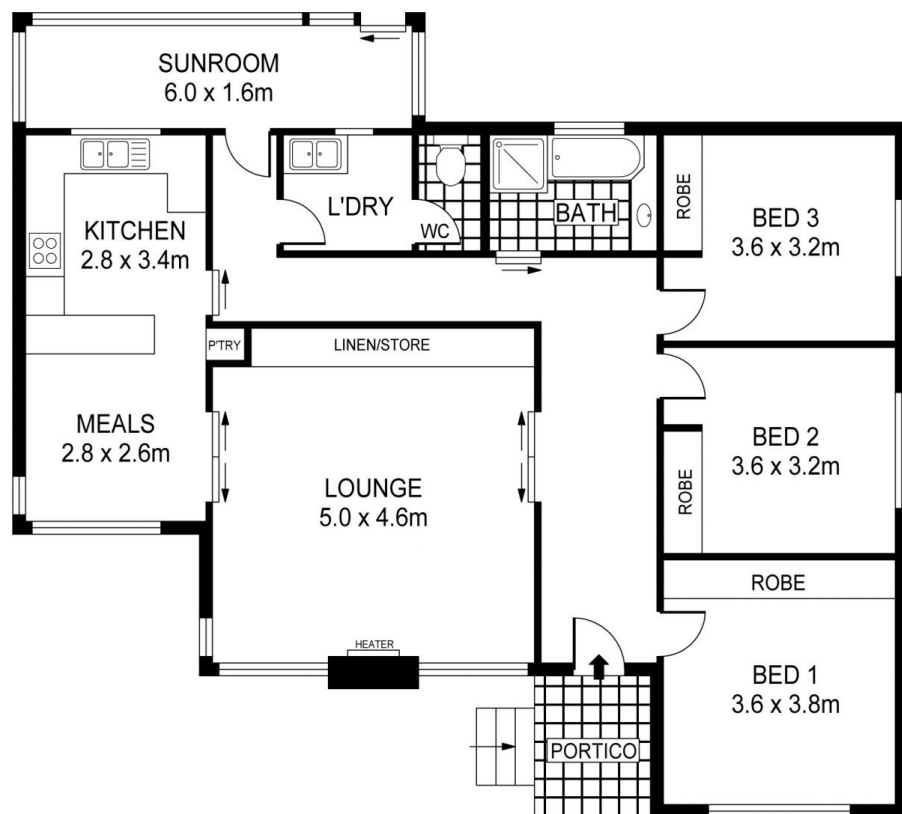
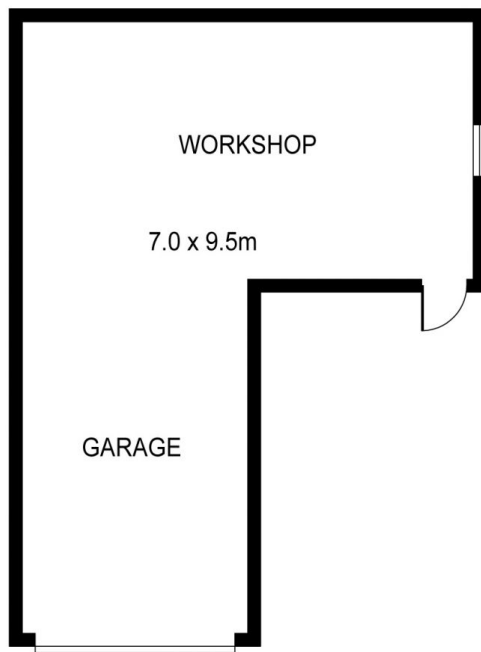
Building Size : 135 sqm

Land Size : 600 sqm

View : <https://www.dck.com.au/lease/vic/greater-bendigo-region/flora-hill/residential/house/5892992>



Jodie Murray
03 5440 5067



0 1 2 3 4 5
SCALE (METRES)



PLANS SHOWN ONLY INDICATIVE OF LAYOUT. DIMENSIONS ARE APPROXIMATE.
Ref. No: 56787

67 CURTIN STREET