

**181 Wattle Street Bendigo VIC**

5 🏠 2 🚗 2 🚗

This house is blessed. It has inspirational views of the cathedral spire from the front patio and Mount Alexander Regional Park from the rear and perched on the edge of the Arts Precinct with a short walk to public schools, recreational parks and sporting facilities.

Internally it has been architecturally transformed to fuse character and charm with modern contemporary style.

Superbly elevated, the family-sized residence features two living areas, a fabulous kitchen, five bedrooms, two decadent bathrooms, storage-rich laundry and an external studio/home office, with its own access from the street, without walking through the house.

The no-expense-spared renovation begins with a front sitting room, spacious dining area and a streamlined kitchen boasting high-quality European appliances, a luxurious long white concrete topped waterfall island bench, walk-in pantry and copious cabinetry with soft-close

**Land Size** : 634 sqm

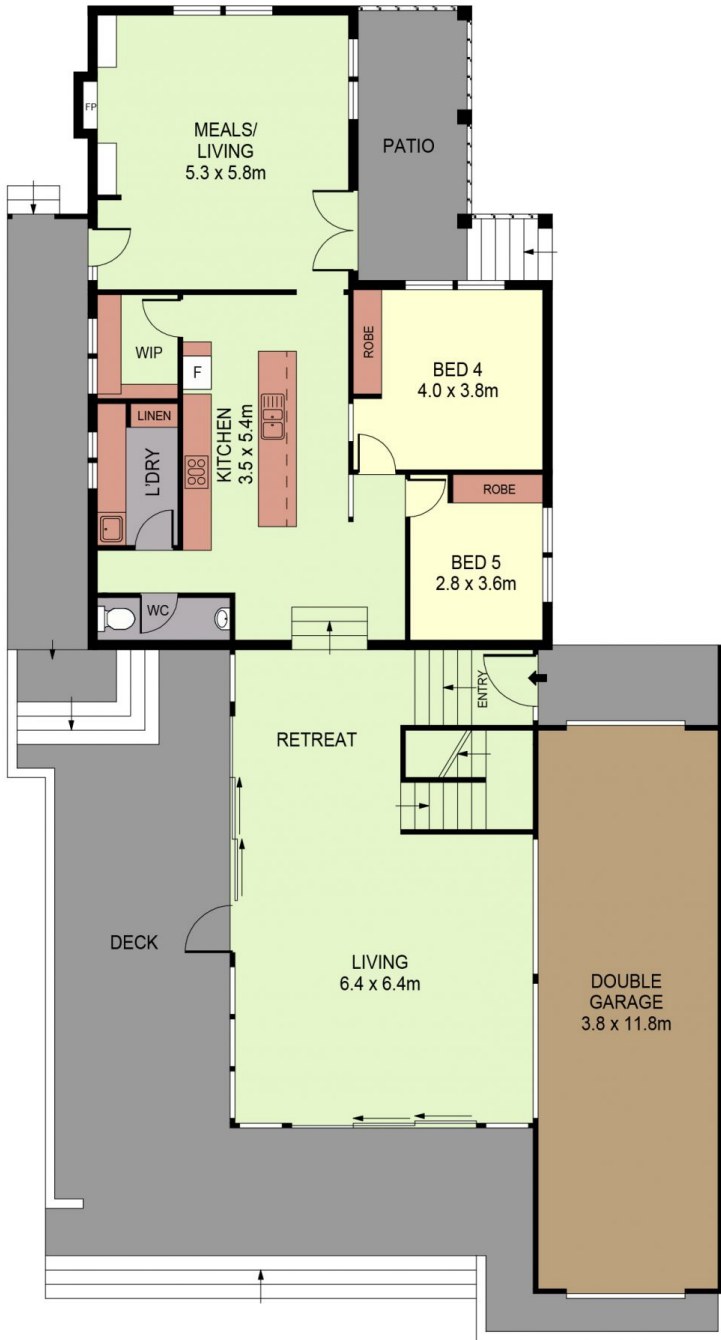
**View** : <https://www.dck.com.au/sale/vic/greater-bendigo-region/bendigo/residential/house/6388777>



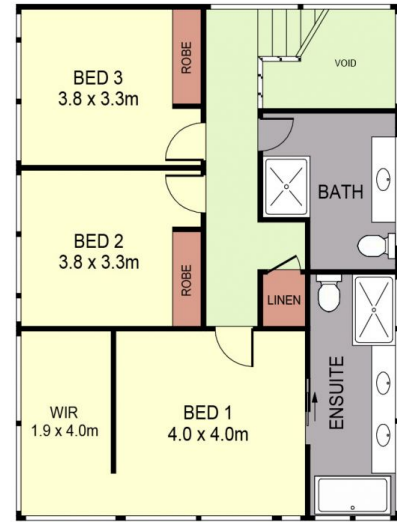
**Kaye Lazenby**  
**(03) 5440 5000**



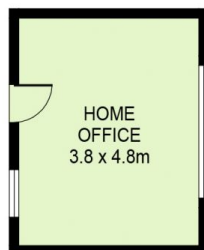
**Leonie Butler**  
**(03) 5440 5000**



LOWER LEVEL



UPPER LEVEL



SCALE (METRES)

SCALE IN METRES. INDICATIVE ONLY. DIMENSIONS ARE APPROXIMATE. ALL INFORMATION CONTAINED HEREIN IS GATHERED FROM SOURCES WE BELIEVE TO BE RELIABLE. HOWEVER WE CANNOT GUARANTEE IT'S ACCURACY AND INTERESTED PARTIES SHOULD RELY ON THEIR OWN ENQUIRIES.



INT	:	265m <sup>2</sup>
GARAGE	:	45m <sup>2</sup>
HOME OFFICE	:	18m <sup>2</sup>

181 WATTLE STREET