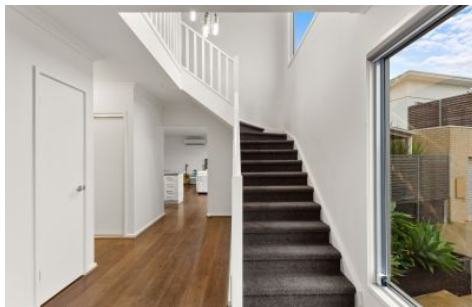




TOWNHOUSE 1



TOWNHOUSE 2



1/29A Landale Drive Strathdale VIC

3 2 2

Located close to the serene Kennington Reservoir with Strath and Kennington Village shopping centres alongside, this immaculate two-storey home will provide every opportunity to relax in style.

Set back from the street the dual townhouse development is suitable for owner-occupiers or investors with residences offered for sale separately.

The contemporary townhouse welcomes you with an elevated front deck and quality finishes with timber-look floors, stone bench-tops, feature lighting and abundant natural light throughout the spacious interior.

The ground floor encompasses an entry lobby, spacious bedroom with a two-way bathroom and walk-in robe, walk-through laundry, powder room and open-plan kitchen/meals and living room opening onto a private alfresco courtyard. Perfect for entertaining family and friends.

Price : \$ 565,000
Land Size : 401 sqm
View : <https://www.dck.com.au/sale/vic/greater-bendigo-region/strathdale/residential/townhouse/6403728>



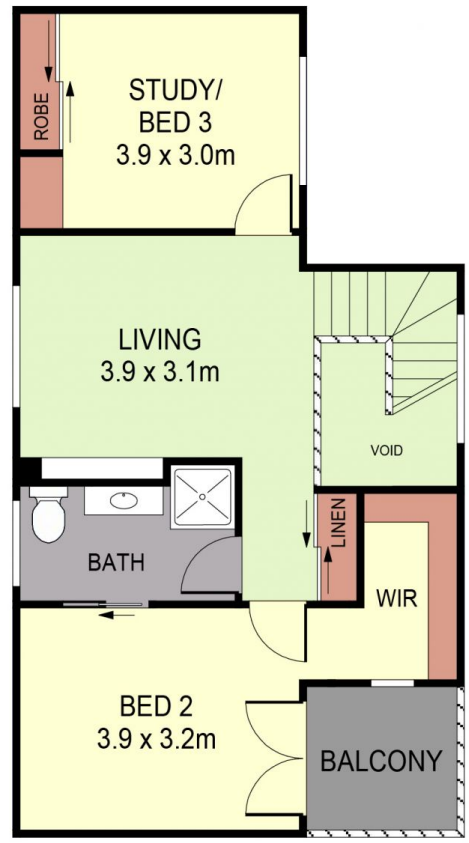
Kaye Lazenby
(03) 5440 5000



Leonie Butler
(03) 5440 5000



LOWER LEVEL



UPPER LEVEL



SCALE IN METRES. INDICATIVE ONLY. DIMENSIONS ARE APPROXIMATE. ALL INFORMATION CONTAINED HEREIN IS GATHERED FROM SOURCES WE BELIEVE TO BE RELIABLE. HOWEVER WE CANNOT GUARANTEE ITS ACCURACY AND INTERESTED PARTIES SHOULD RELY ON THEIR OWN ENQUIRIES.



INT : 156m²
GARAGE : 36m²

1/29A LANDALE DRIVE