



16 Valentine Street Bendigo VIC

5 2 3

Standing prominently on the corner of View & Valentine Streets, "Malmo" was designed circa 1898 by renowned Bendigo architect William Beebe. Commissioned by prominent local citizen & philanthropist, Mr Karl Van Damme, it reflects one of the architect's favourite styles - the Queen Anne Revival. Tastefully & faithfully restored, the home boasts tuck-pointed red brickwork, a unique gabled roof of recently restored Marseille terracotta tiles with elaborate ridging, finials & ribbed chimneys with detailed timber fretwork to the verandah & balcony. Restored tessellated tiling graces the verandah & the entry foyer impresses with a grand Kauri pine staircase. Atop the stairs, is a spacious landing, 3 bedrooms, dressing room & new bathroom featuring walk-in shower, double vanity, WC & marble tiling. The opulent main bedroom features a fireplace & diamond leadlight-glazed arched windows overlooking View Street. The 2nd bedroom has a

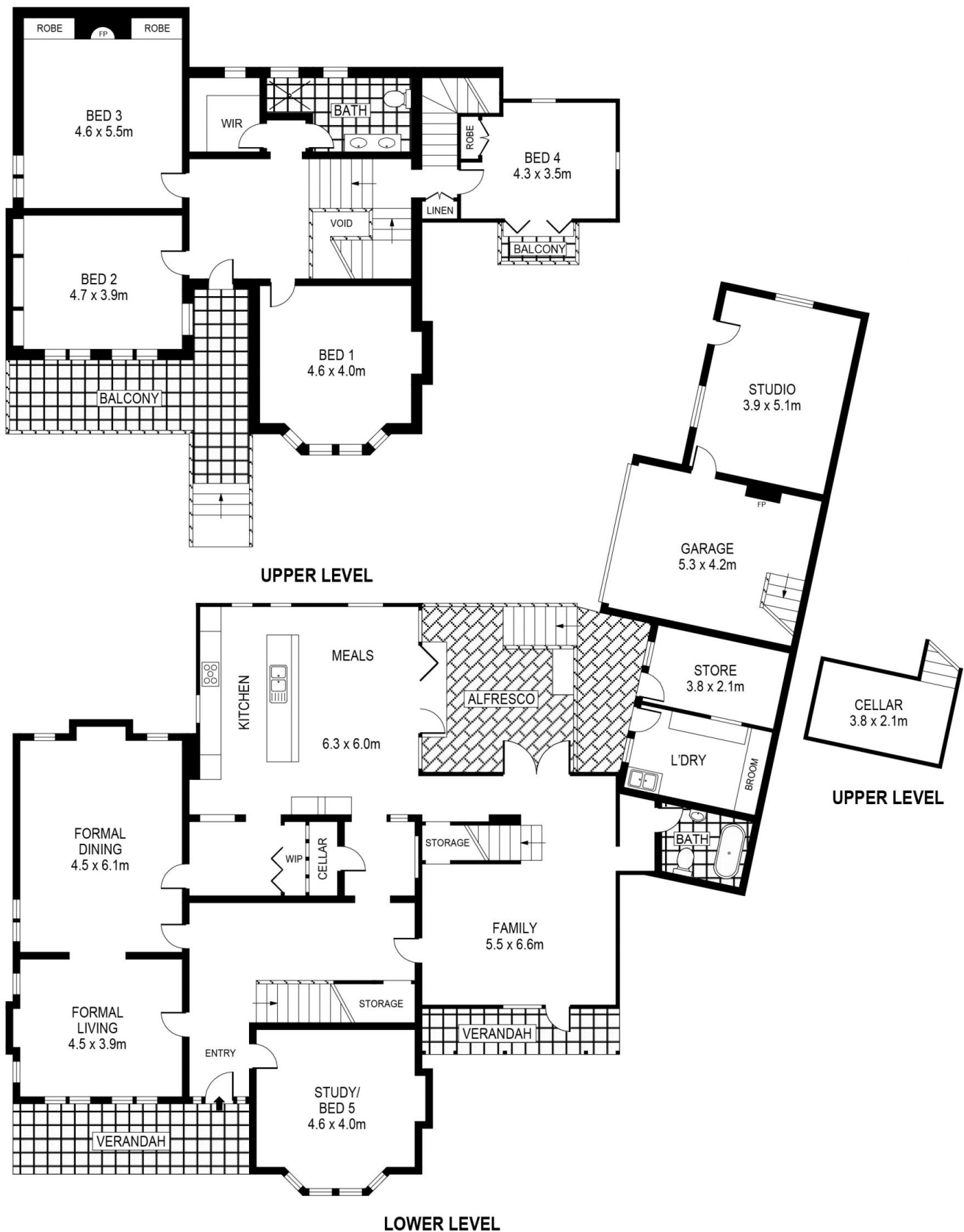
Price : \$ 2,500,000
Land Size : 1416 sqm
View : <https://www.dck.com.au/sale/vic/greater-bendigo-region/bendigo/residential/house/6476282>



Leonie Butler
(03) 5440 5000



Kaye Lazenby
(03) 5440 5000



SCALE (METRES)

SCALE IN METRES. INDICATIVE ONLY. DIMENSIONS ARE APPROXIMATE. ALL INFORMATION CONTAINED HEREIN IS GATHERED FROM SOURCES WE BELIEVE TO BE RELIABLE. HOWEVER WE CANNOT GUARANTEE ITS ACCURACY AND INTERESTED PARTIES SHOULD RELY ON THEIR OWN ENQUIRIES.

INT	: 313m ²
L'DRY	: 9m ²
STORE	: 8m ²
STUDIO	: 20m ²
GARAGE/CELLAR	: 32m ²

16 VALENTINE STREET