

38 Butcher Street Strathdale VIC

4 2 5

An architecturally designed masterpiece awaits your living desire; taking full advantage of thermal mass to provide a natural path to year round climate comfort. Energy from the sun's rays also feeds your solar system.

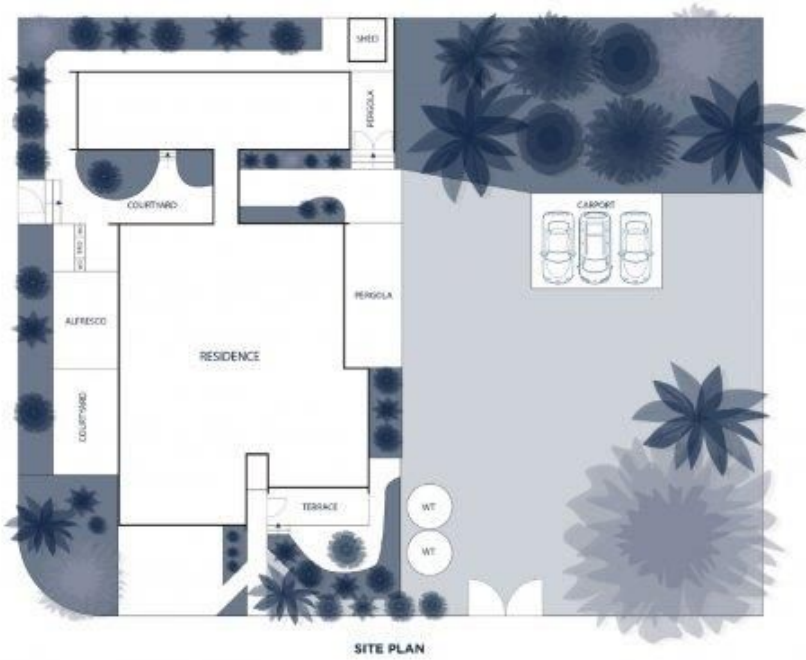
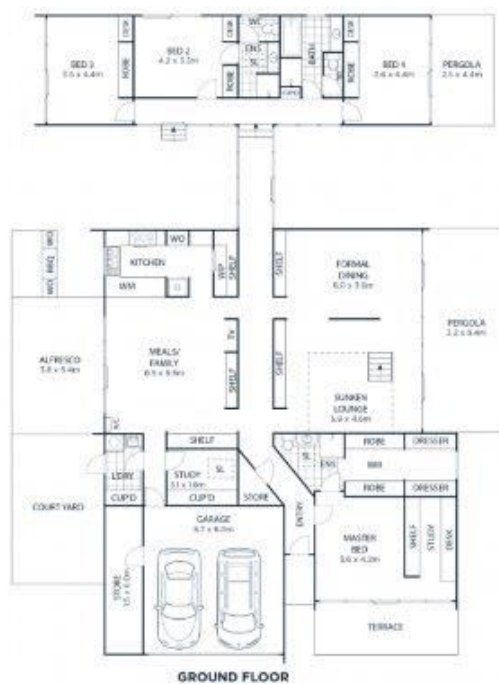
Cleverly located at the front of the home, the large Master Suite is complete with WIR and dressing room, ensuite and a study that could easily be a second WIR if you'd prefer (there's another separate study also so you won't be losing out). Your own private terrace is a perfect place to enjoy your morning coffee in the warmth of the rising sun.

Timber-lined ceilings maintain a seamless flow and sense of connectivity throughout the home, while a majestic light-filled hallway is clearly the work of a clever architect in creating exceptionally functional spaces.

View : <https://www.dck.com.au/lease/vic/greater-bendigo-region/strathdale/residential/house/7048446>



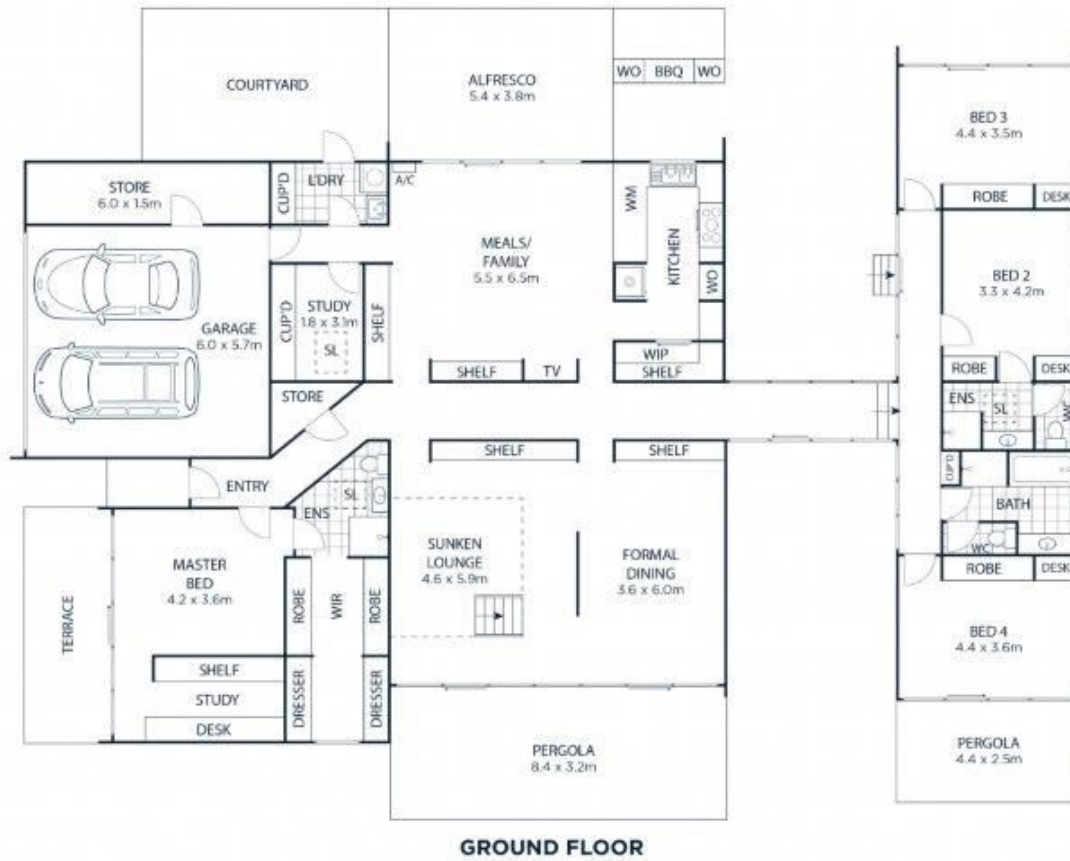
Ashlye Faulkner
(03) 5440 5063



Whilst bwm.com.au has made every attempt to ensure the accuracy of the floor plan contained here, measurements are approximate and no responsibility is taken for any error, omission, or mis-statement. This plan is for illustrative purposes only.

38-40 Butcher Street, Strathdale





Whilst bwrn.com.au has made every attempt to ensure the accuracy of the floor plan contained here, measurements are approximate and no responsibility is taken for any error, omission, or mis-statement. This plan is for illustrative purposes only.

38-40 Butcher Street, Strathdale

