

1/14 Park Street Strathdale VIC

3 1 1

Nestled in a highly-sought Strathdale area, this spacious brick veneer townhouse embodies tranquillity and convenience.

As neat as when first built, it's positioned mere steps from Strathdale Park, a local bakery, cafes/restaurants, medical practices and public transport, with Coles supermarket, Strath/Kennington Village shopping centres, Kennington Reservoir and LaTrobe University, all a little further afield.

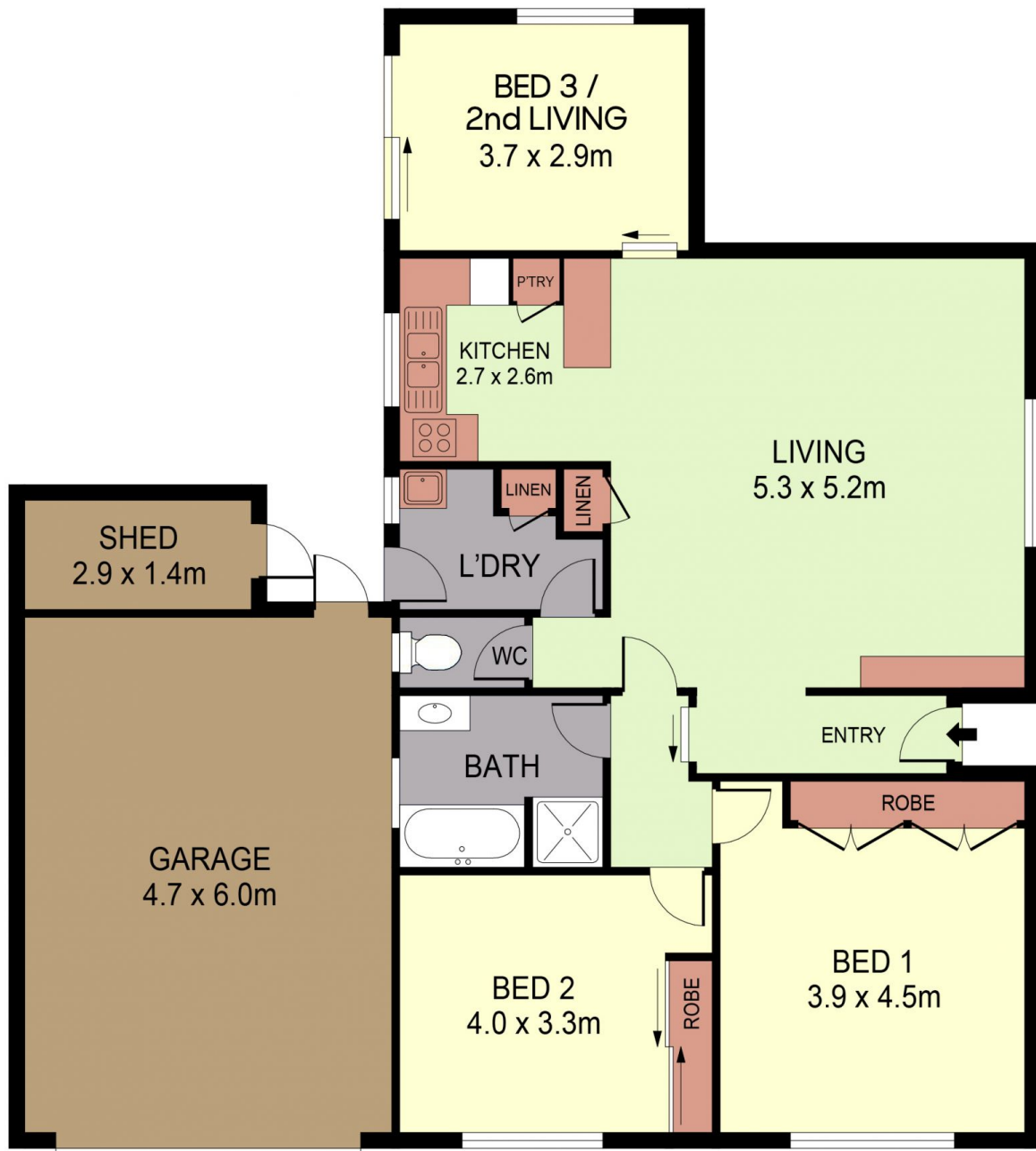
The comfortable, conventional design includes a tiled entry hall opening to a spacious lounge with a built-in wall unit and split system air conditioning for year-round comfort. The kitchen boasts good storage and bench space, electric cooking, and a dishwasher. The three-piece bathroom and separate toilet sit opposite two good-sized bedrooms (BIR), while a versatile third bedroom with access to the rear yard

Price : \$ 420,000

View : <https://www.dck.com.au/sale/vic/greater-bendigo-region/strathdale/residential/unit/7894507>



Kaye Lazenby
(03) 5440 5000



0 1 2 3 4
SCALE (METRES)

SCALE IN METRES. INDICATIVE ONLY. DIMENSIONS ARE APPROXIMATE. ALL INFORMATION CONTAINED HEREIN IS GATHERED FROM SOURCES WE BELIEVE TO BE RELIABLE. HOWEVER WE CANNOT GUARANTEE ITS ACCURACY AND INTERESTED PARTIES SHOULD RELY ON THEIR OWN ENQUIRIES.
Ref. No: 240129

INT : 109m²
SHED : 4m²
GARAGE : 23m²

1/14 PARK STREET

STRATHDALE