



2/9 Nabilla Crescent Strathdale VIC

2 1 1

Are you seeking a gentle lifestyle in a prime position? Then don't overlook this excellent unit.

It is a happy mix of security, privacy, and convenience, ideally positioned a 2-minute walk to Kennington Reservoir with Strath/Kennington Village shopping centres, public transport, medical practices, etc., a little further away.

It boasts a large lounge off the entry featuring a built-in wall unit and split system air conditioning. Both good-sized bedrooms have built-in robes, while an updated bathroom is handy for both.

The separate laundry includes a double linen cupboard and external access.

A roomy meals area adjoins the U-shaped kitchen, where

Price : \$ 368,000

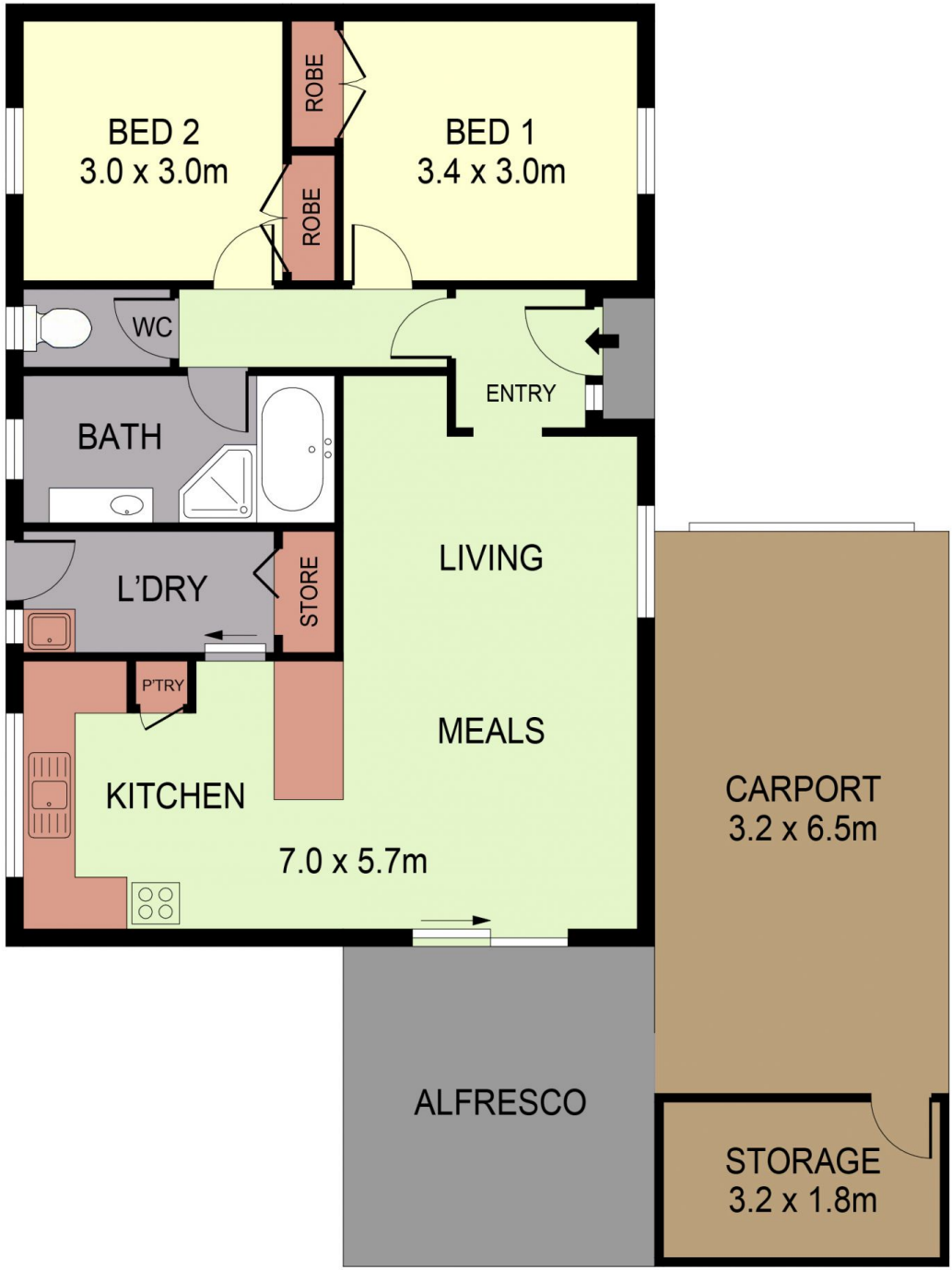
View : <https://www.dck.com.au/sale/vic/greater-bendigo-region/strathdale/residential/unit/7930637>



Kaye Lazenby
(03) 5440 5000



Yvette Homewood
(03) 5440 5000



SCALE (METRES)

SCALE IN METRES. INDICATIVE ONLY. DIMENSIONS ARE APPROXIMATE. ALL INFORMATION CONTAINED HEREIN IS GATHERED FROM SOURCES WE BELIEVE TO BE RELIABLE. HOWEVER WE CANNOT GUARANTEE ITS ACCURACY AND INTERESTED PARTIES SHOULD RELY ON THEIR OWN ENQUIRIES.
Ref. No: 240223

INT	:	81m ²
CARPORT	:	21m ²
STORAGE	:	6m ²
ALFRESCO	:	13m ²

2/9 NABILLA CRESCENT

DOMUS