



3 Glenelg Drive Maiden Gully VIC

3 2 4

Looking for a spacious retreat with room to roam, yet conveniently close to all the essentials? Look no further than this charming one-owner homestead-style home on a lot of over one acre.

The deep setback from the street behind extensive grassed areas and beds of evergreen conifers provide the privacy and tranquillity we all crave.

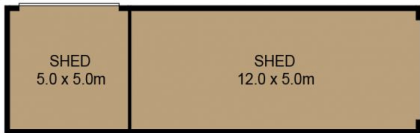
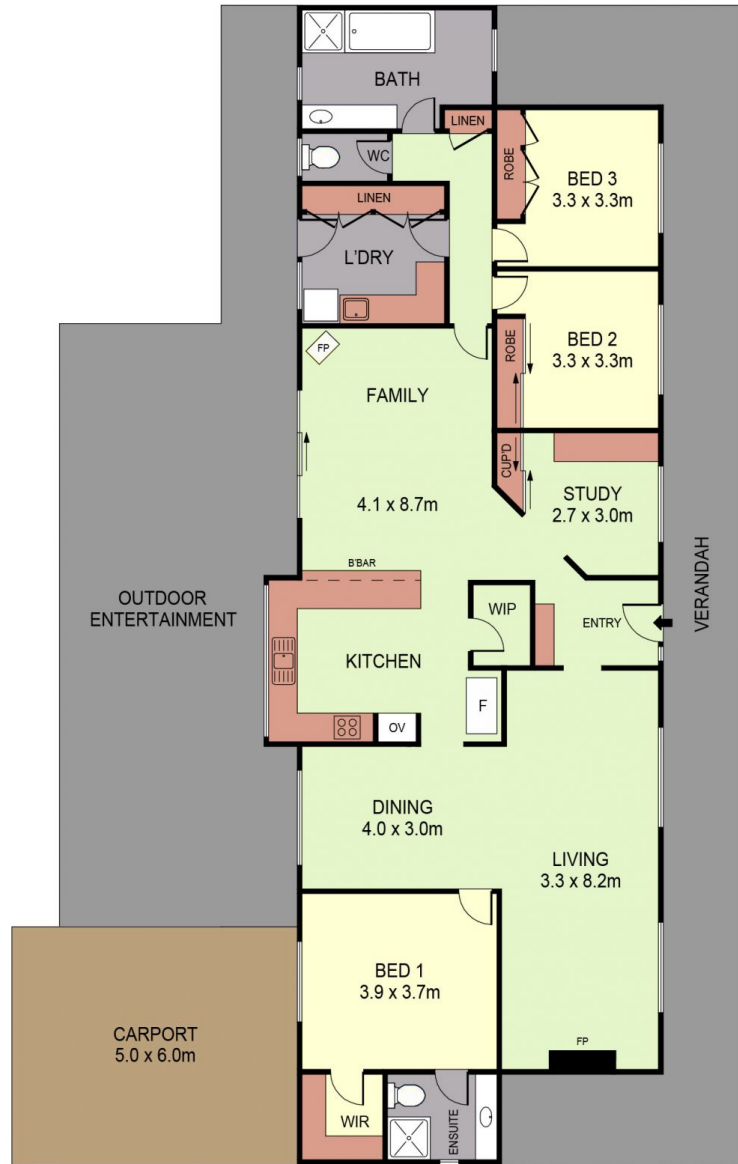
The well-maintained home is ready to welcome new owners - it's ideal for those seeking space for a growing family, storage for cherished belongings, or a welcoming place for grandchildren to visit.

A full-length front verandah bids a warm welcome to the slate-tiled entryway leading to a study and the formal lounge with a rustic brick fireplace, complemented by a

Price : \$790,000
Land Size : 4354 sqm
View : <https://www.dck.com.au/sale/vic/greater-bendigo-region/maiden-gully/residential/house/7938370>



Kaye Lazenby
(03) 5440 5000



SHED
(NOT TO SCALE)



SCALE (METRES)

SCALE IN METRES. INDICATIVE ONLY. DIMENSIONS ARE APPROXIMATE. ALL INFORMATION CONTAINED HEREIN IS GATHERED FROM SOURCES WE BELIEVE TO BE RELIABLE. HOWEVER WE CANNOT GUARANTEE ITS ACCURACY AND INTERESTED PARTIES SHOULD RELY ON THEIR OWN ENQUIRIES.
Ref. No: 240304

INT	:	160m ²
SHED	:	85m ²
CARPORT	:	30m ²
VERANDAH	:	72m ²
OUTDOOR ENTERTAINMENT	:	57m ²

3 GLENELG DRIVE

