



18 Sandstone Rise Strathdale VIC

3 1 1

Are you feeling the pinch of rising living costs? Look no further than this captivating bi-level home nestled in a tranquil Strathdale neighborhood.

This sustainable haven in a whisper-quiet Strathdale street was architect-designed to take full advantage of the northerly aspect. It features raked ceilings and exposed beams for added spaciousness. Large, double-glazed windows fill the open-plan living, dining and kitchen area with warm winter sunshine and shaded in summer with external cantilever louvred awnings.

Accommodation includes two newly carpeted upper-level bedrooms and the main downstairs - all three have robes and ceiling fans.

The spacious North facing living area shines with the

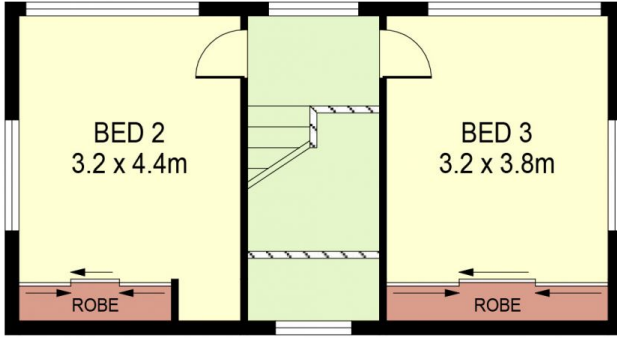
Price : \$ 505,000
Land Size : 485 sqm
View : <https://www.dck.com.au/sale/vic/greater-bendigo-region/strathdale/residential/house/7954410>



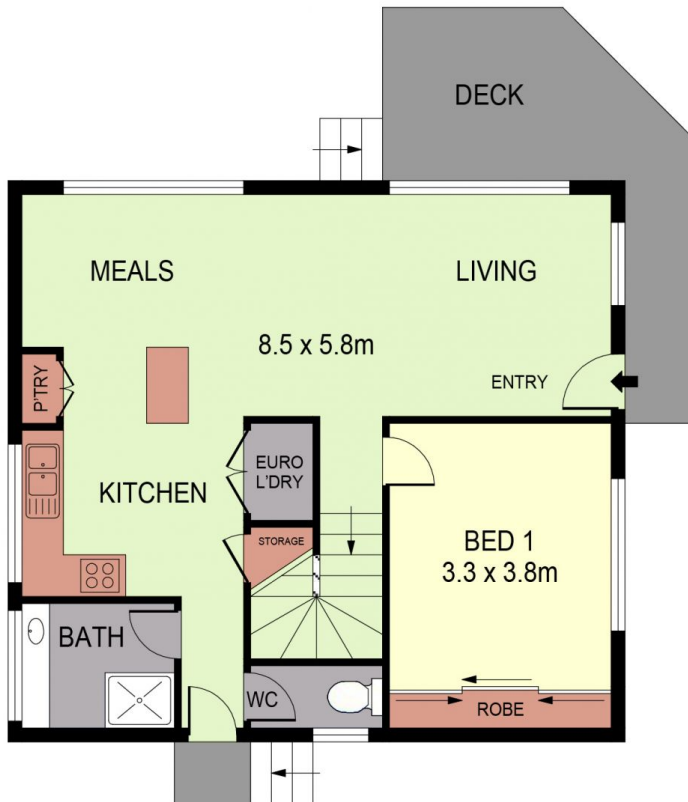
Kaye Lazenby
(03) 5440 5000



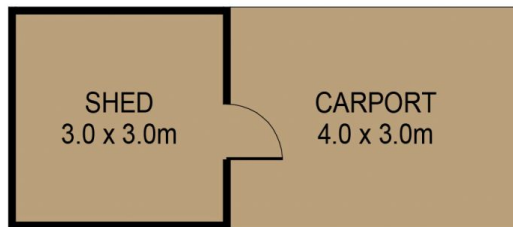
Yvette Homewood
(03) 5440 5000



UPPER LEVEL



GROUND LEVEL



SCALE IN METRES. INDICATIVE ONLY. DIMENSIONS ARE APPROXIMATE. ALL INFORMATION CONTAINED HEREIN IS GATHERED FROM SOURCES WE BELIEVE TO BE RELIABLE. HOWEVER WE CANNOT GUARANTEE ITS ACCURACY AND INTERESTED PARTIES SHOULD RELY ON THEIR OWN ENQUIRIES.
Ref. No. 240318

INT	:	113m ²
DECK	:	13m ²
SHED	:	9m ²
CARPORT	:	2m ²

18 SANDSTONE RISE