



2/16 Rosemary Avenue Strathdale VIC

2 1 1

This charming brick veneer unit offers a spacious layout with two well-sized bedrooms, each equipped with built-in robes for ample storage. The unit features modern gas facilities throughout, ensuring comfort and convenience.

The bathroom is well-appointed, including a bath, shower, and vanity, providing everything you need for relaxation and functionality. Situated in a prime location, this unit offers both comfort and convenience.

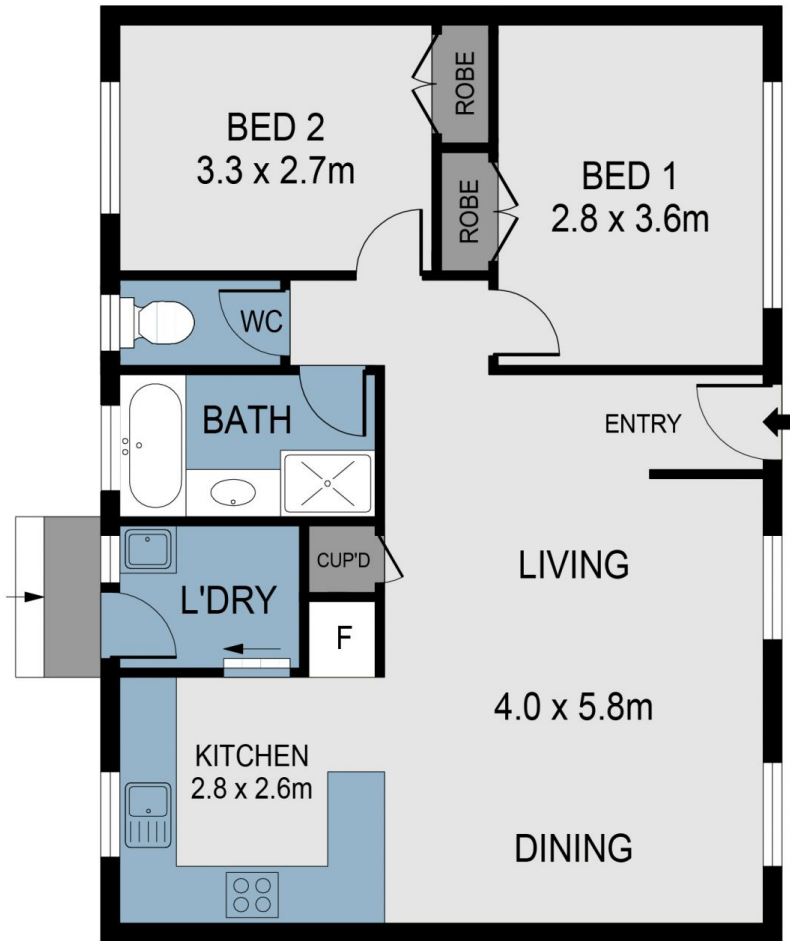
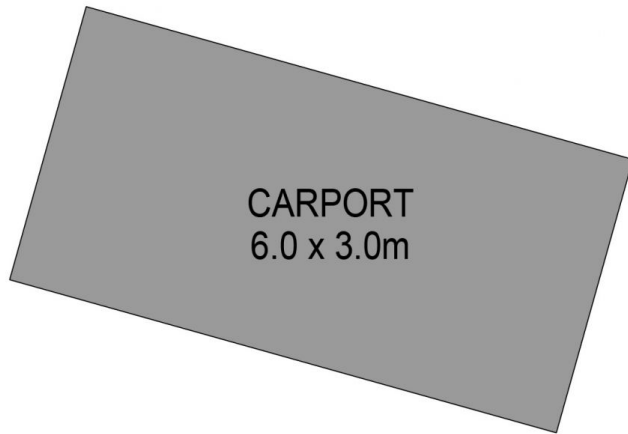
Externally, you'll find a carport, all set within a peaceful and quiet area, making it an ideal place to call home.

Type : Unit

View : <https://www.dck.com.au/sale/vic/greater-bendigo-region/strathdale/residential/unit/8097782>



Matt Bowles
5440 5011



SCALE (METRES)

SCALE IN METRES. INDICATIVE ONLY. DIMENSIONS ARE APPROXIMATE. ALL INFORMATION CONTAINED HEREIN IS GATHERED FROM SOURCES WE BELIEVE TO BE RELIABLE. HOWEVER WE CANNOT GUARANTEE ITS ACCURACY AND INTERESTED PARTIES SHOULD RELY ON THEIR OWN ENQUIRIES.
Ref. No. 240813



INT : 71m²
CARPORT : 18m²

2/16 ROSEMARY AVENUE

KENNINGTON