



16 Odea Crescent Kangaroo Flat VIC

4 2 2

Whether you are starting your home ownership journey, looking to downsize, or somewhere in between - this lovely home is worthy of your inspection.

Impeccably maintained, the residence sits on a large lot of approximately 950m² graced with attractive yet easy-care landscaping, an approx. 6m x 7m handyman shed/workshop and a tool shed.

The spacious home includes a private entry foyer, a front lounge with a north-facing bay window, a cosy sitting room and a roomy open-style kitchen and dining area.

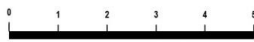
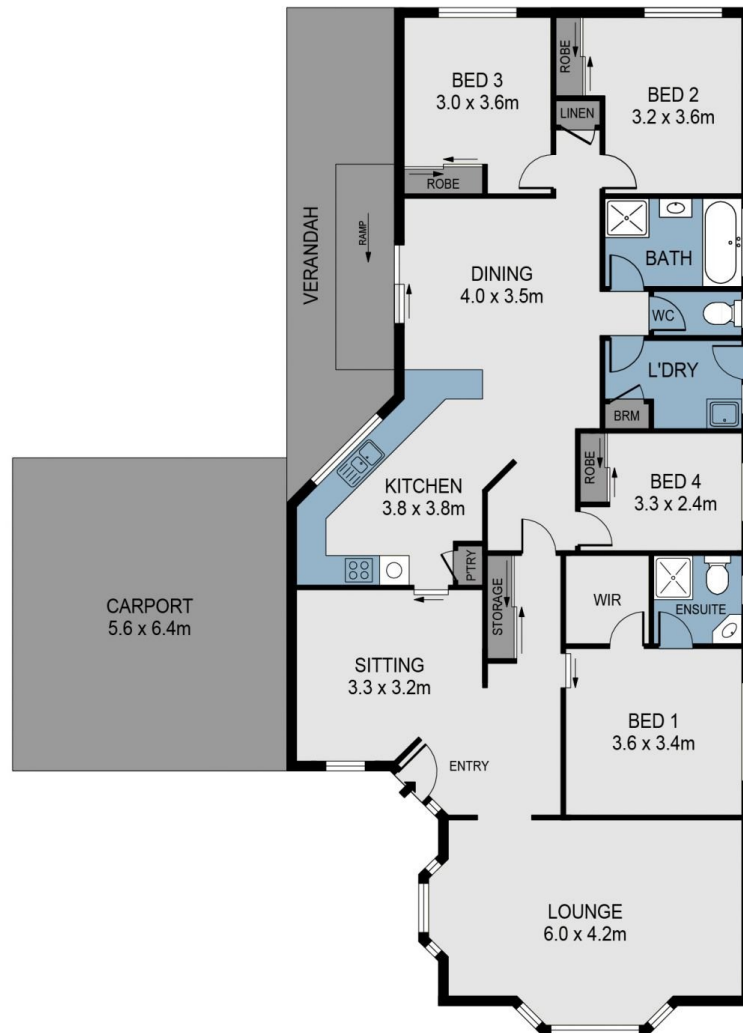
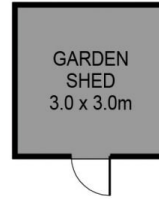
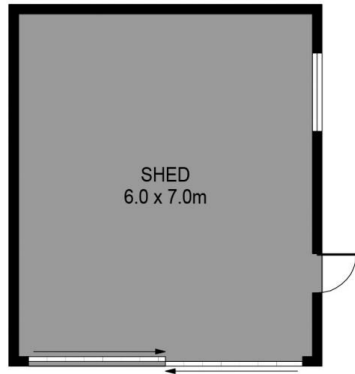
The main bedroom has a walk-in wardrobe and ensuite, while two more bedrooms at the back share the renovated

Type : House
Price : \$ 585,000
Land Size : 950 sqm
View : <https://www.dck.com.au/sale/vic/greater-bendigo-region/kangaroo-flat/residential/house/8135843>



Kaye Lazenby
(03) 5440 5000

[For full version visit the website](https://www.dck.com.au)



SCALE (METRES)

SCALE IN METRES. INDICATIVE ONLY. DIMENSIONS ARE APPROXIMATE. ALL INFORMATION CONTAINED HEREIN IS GATHERED FROM SOURCES WE BELIEVE TO BE RELIABLE. HOWEVER WE CANNOT GUARANTEE IT'S ACCURACY AND INTERESTED PARTIES SHOULD RELY ON THEIR OWN ENQUIRIES.
Ref. No: 240924

INT	:	165m ²
SHED	:	42m ²
CARPORT	:	36m ²
VERANDAH	:	19m ²
GARDE / St	:	9m



16 O'DEA CRESCENT

