



1 Annabell Court Spring Gully VIC

3 1 1

Welcome to 1 Annabell Court, a delightful residence nestled in the heart of Spring Gully. This charming property, situated on an approximate 450m² block, offers a perfect blend of comfort and convenience in a tranquil setting.

With recent updates including a fresh coat of paint both inside and outside, the home is the perfect offering for first home buyers, downsizers and investors alike.

In all, there are 3 generous bedrooms all with built-in robes, providing ample room for relaxation and personalization. The sizeable living/meals area offers elevated views framed by a north facing picture window, while the kitchen offers ample cupboard and bench space.

[For full version visit the website](#)

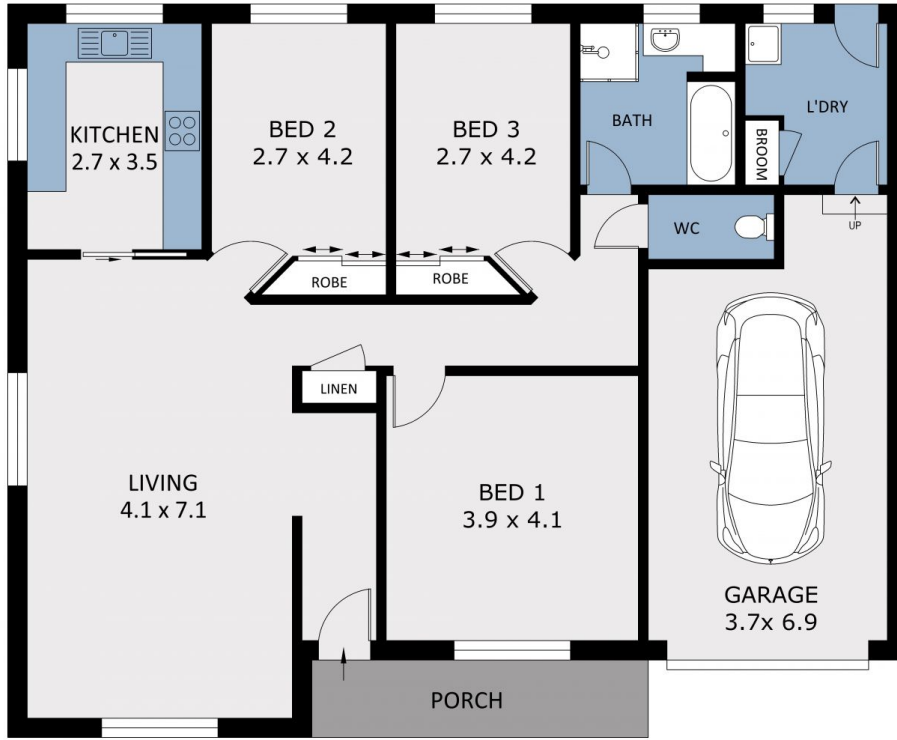
Type : House
Land Size : 450 sqm
View : <https://www.dck.com.au/sale/vic/greater-bendigo-region/spring-gully/residential/house/8147245>



Marc Cox
(03) 5440 5000



Justin Pell
(03) 5440 5000



Scale in metres. Indicative only. Dimensions are approximate. All information contained herein is gathered from sources we believe to be reliable. However we cannot guarantee its accuracy and interested parties should rely on their own enquiries.

| | |
|--------------|-----------------------------|
| Residence | - 108.8m ² |
| Porch | - 6.2m ² |
| Garage | - 23.1m ² |
| Total | - 138.1m² |



1 Annabell Court, Spring Gully