



### 223 Mclvor Road Strathdale VIC

3 1 2

Cream brick veneer homes from the late '50s and '60s are popular once more! Topped with a terracotta tiled roof, the triple-fronted facade features steel-framed windows, and the front patio boasts wrought iron detailing.

This classic example is very original, so much so it's like stepping into your childhood (or grandparents') home from the 60s.

It has three bedrooms, a three-piece bathroom, and a gas-heated lounge room with glass sliding double doors separating it from the dine-in kitchen.

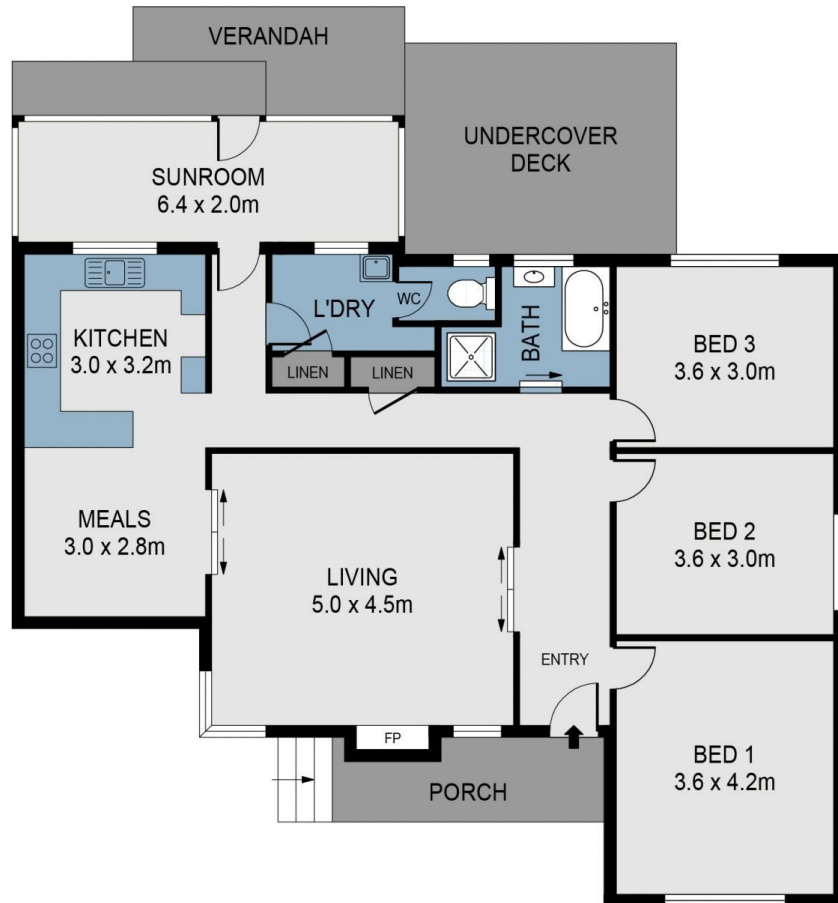
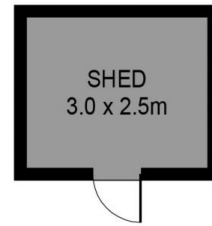
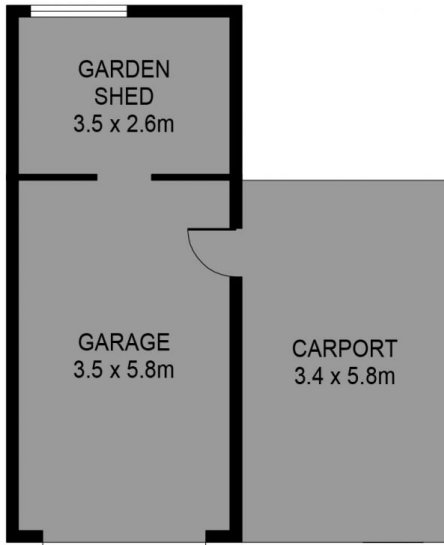
The kitchen retains original cabinetry but boasts an upgraded stainless-steel gas/electric cooker.

[For full version visit the website](https://www.dck.com.au/sale/vic/greater-bendigo-region/strathdale/residential/house/8257121)

**Type** : House  
**Price** : \$445,000  
**Land Size** : 765 sqm  
**View** : <https://www.dck.com.au/sale/vic/greater-bendigo-region/strathdale/residential/house/8257121>



**Kaye Lazenby**  
**(03) 5440 5000**



SCALE (METRES)

SCALE IN METRES. INDICATIVE ONLY. DIMENSIONS ARE APPROXIMATE. ALL INFORMATION CONTAINED HEREIN IS GATHERED FROM SOURCES WE BELIEVE TO BE RELIABLE. HOWEVER WE CANNOT GUARANTEE ITS ACCURACY AND INTERESTED PARTIES SHOULD RELY ON THEIR OWN ENQUIRIES.  
Ref. No: 250213

INT	134m <sup>2</sup>
SHED	8m <sup>2</sup>
PORCH	5m <sup>2</sup>
GARAGE	20m <sup>2</sup>
CARPORT	20m <sup>2</sup>
VERANDAH	10m <sup>2</sup>
GARDEN SHED	9m <sup>2</sup>
UNDERCOVER DECK	10m <sup>2</sup>

223 MCIVOR ROAD

